

# THE DEAF CHILD'S ADVOCATE

Published at 2969 W. 25th St., Cleveland, O., in the interest of the Ev. Luth.  
Institute for the Deaf, 6861 Nevada Ave., Detroit, Michigan.

Volume IX

JUNE, 1940

Number 7

## OUR NEW BUILDINGS

### Planned for many years

The plans for the new buildings for our Institute were studied and sketched over a period of many years. Many problems had to be solved to provide a home, school and church for deaf children entrusted to our care for a period of at least 10 months of each year. It was necessary to plan proper living and sleeping quarters for male and female children and for male and female help. Feeding 110 or more persons three meals a day had to be taken care of. Laundry facilities and space for the necessary mendings and repairs had to be provided. The location of stairs and the general plan of circulation must be flexible. Our Class Rooms had to follow a special layout since a teacher for the deaf can take care of a maximum of 12 children while 7 or 8 are ideal. Ordinarily acoustics are introduced to quiet noises but our problem was the reverse, for reverberation had to be provided so as to obtain the attention of the deaf who are very sensitive to vibrations. The cost of maintenance was a large factor in deciding the kind of structure and finish and at the same time not to sacrifice the home environment desired. A Chapel had to be in-

corporated so that the main reason for the existence of our Institute would have a fitting climax.

The property consists of 20 acres being about 650 feet wide and 1350 feet long and abutting upon a street at front and back and along the entire west side.

### Fire-proof construction throughout

The buildings are of fire-proof construction throughout. All walls and partitions are of masonry, lined in some cases with glazed tile wainscots, and in other cases are of exposed cinderblock, decorated. Door frames are of steel, and the only wood used is for doors and windows. Floors are of cement, linoleum, linotile and terrazzo as the various spaces require.

On approaching the building from Nevada Avenue the main entrance is reached by means of a broad, curved sidewalk leading to the main door flanked by appropriate light standards. Passing through the vestibule one enters a spacious Lobby appropriately plastered, decorated and furnished.

To the left of the Lobby one enters a Lounge finished in early American with knotty pine walls, maple furnishings and carpeted floor.

### Girls' Dormitory

From the Lobby you enter a Corridor transversing the "West Dormitory" which provides the living and sleeping quarters for our deaf girls. There is a large and spacious Living Room for the older girls and adjoining the same is a large Living Room for the younger girls. Each is fully furnished. At the end of the first story Corridor is a Hospital Room, bath and private room for a nurse if required. Here is also a furnished room and bath for the Matron. Adequate toilet and wash rooms together with two locker rooms are provided. For the necessary mending and sewing there is a room.

Walking up one of the stairs in this wing you reach the second story level which is divided into one 8-bed dormitory with crib beds, six dormitories of 6 beds each and one 10 bed dormitory. An Isolation Room of 3 beds is provided so that if a child develops a sudden cold or illness it can be immediately removed from its companions. A comfortably furnished room and bath for the Supervisor is centrally located. Linen storage, toilet, wash room and bath rooms are in their proper locations. The west wing basement is used for play space for the girls where they can romp and jump when the weather

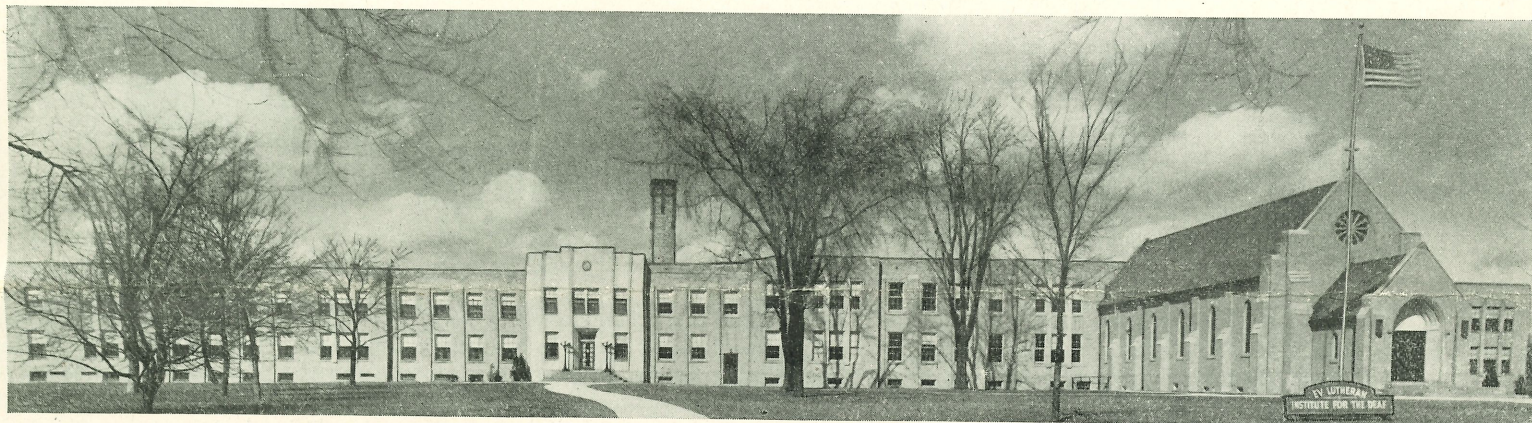
is too inclement. The west wing provides a complete home for our girls.

### Dining Room

Traveling back to the first floor Lobby there is a wing extension from same to the rear. This wing contains a spacious Dining Room, followed by Kitchen and Store Room. In the second story of this wing there are 8 single rooms and 2 double rooms for the resident teachers and help. The basement of this wing contains large Store Rooms for food supplies and also a completely equipped Laundry, Ironing and Mending Room. From the basement Laundry the one story Boiler Room may be entered which is so located, that, although it adjoins the building walls, it is entirely independent.

### Administration Building

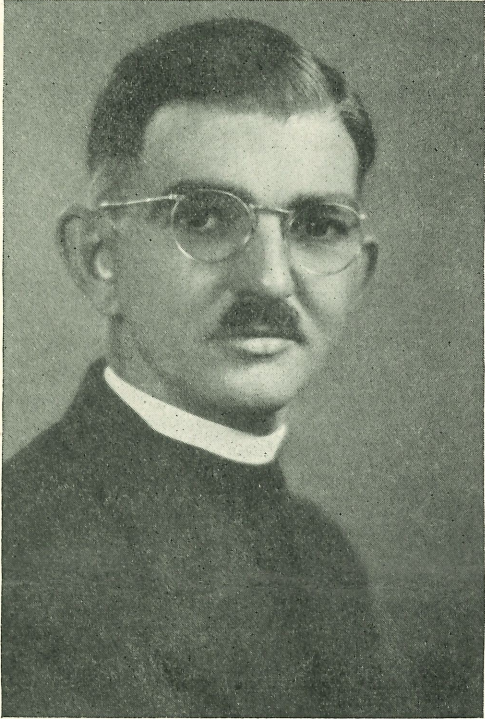
We again retrace our steps to the Lobby and open a door to our right and enter our Educational and Administrative Building consisting of 8 Class Rooms, Offices and Library in first story and a large Kindergarten Room, 3 Class Rooms, and a large open space used for the supervised study periods in second story. The basement is planned to provide rooms and space for manual training at a later time.



Girls' Dormitory — Administration Building — Chapel — Boys' Dormitory (at extreme right)

### Boys' Dormitory

From the east end of the Educational Building we enter the "East Dormitory" which completely houses the boys. In general it is similar to the West Dormitory, excepting being smaller, since the five dormitories in second story give space for 35 beds with an Isolation Room containing 3 beds. In the first story is a large Living Room for the older boys and a smaller one for the younger boys.



Rev. E. T. Bernthal

The first story also has a Matron's Room and Bath while quarters for a Supervisor is located in second story. Basement is used for Play Room by the boys in inclement weather.

### Gloria Dei Chapel

Where the Educational and Administrative Building and the East Dormitory join the Chapel projects out to the front. It has a Nave with pews to seat 225 people, a narrow and deep Chancel together with Sacristy. The basement has been painted and equipped by the local Our Saviour Deaf Congregation.

We are all happy that after long years of expectancy and planning our deaf children have a modern home, school and church.

WALTER MAUL

—0—

### MY PRAYER

Lord, help me ever thus to pray:  
Thy will, not mine be done to-day,  
And keep me in the narrow way,—  
This be my prayer.

## Tribute to Our Committee for New Buildings

### Board of Directors appoint the Rev. E. T. Bernthal, Chairman, and the Rev. Adam Fahling, Assistant

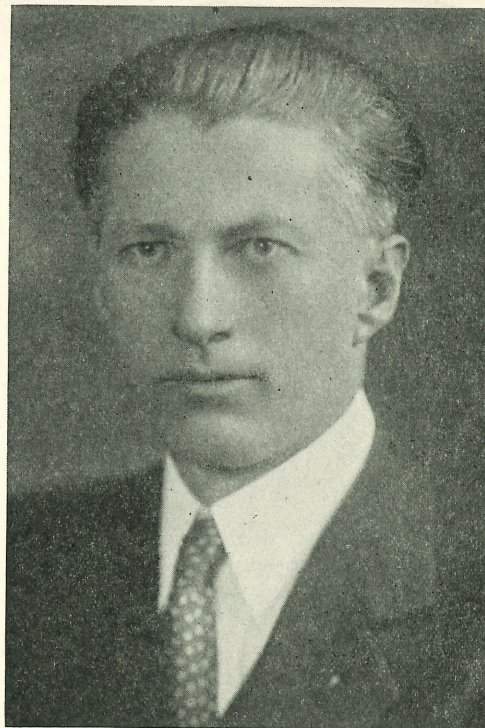
The message which particularly gladdened the hearts of thousands who attended the dedication grounds on Sunday, May 14th, 1940, was that of Rev. E. T. Bernthal, Chairman of the Building Campaign, when he announced

In 1938, when the astonishing growth in enrollment had forced the Board of Directors to face the fact that it must either curtail its expanding mission opportunity or must build, it reluctantly called a meeting of its Association members, placed the facts before them and asked for authority to build a second dormitory. After weighty discussion with regard to possible financing, an enthusiastic speech by Rev. E. T. Bernthal, of Epiphany congregation, Detroit, immediately broadened the horizon of hoped for growth. He stated that our goal should not be a new building only, but taking encouragement from the manifest blessing which God was bestowing upon this work, we should aim for the complete building program as planned years before; that the ever increasing enrollment was a mandate; and that the crisis with which we were faced was a challenge to our faith, as well as a distinct sign that our prayers for

thal in mind, and he agreed, although not in the best of health, to accept the heavy responsibility with the provision that Rev. A. Fahling would act as his assistant. Now and then, when the distribution of literature was particularly heavy, groups of volunteers were pressed into service,

### Committee received whole-hearted support

With this assistance, the Rev. Bernthal and the Rev. A. Fahling have carried on the campaign until it has reached its present successful stage. In spite of the generally weakened business conditions, floods, fires, wars, and threats of war their efforts were blessed with success. The campaign was carefully planned and ably executed; and the quality and effect of the appeal literature have been accorded the highest praise, not only by leaders in Synod, but by noted authorities in advertising and promotional work. To give some idea of the tremendous task involved, let it be pointed out that well over a million pieces of literature were distributed; each contribution, wherever possible, was individually acknowledged; contributions



Rev. A. Fahling

that the goal as set by the Board of Directors had now been reached. He pleaded, however, that the wonderful support accorded by Synod's pastors, teachers, laymen and congregations be extended for yet a little time, so that the much needed residences for our Director and his assistant might be included to complete the entire building program and that the sizeable debt in our maintenance also be liquidated. It is sincerely hoped that this plea will be heeded, that the interruption occasioned by almost continuous building for the past several years may soon be only a memory and that our efforts may again be confined to our chief purpose, namely, the instruction and care of the children entrusted to us.

The Board of Directors believes this to be a most appropriate time to publicly express its appreciation and gratitude to the campaign leaders, who with the help of our Lord and the prayers of our friends have made this glorious accomplishment a fact.

support would be heeded. His stirring words did much to sway the gathering, and within a few weeks after the preliminary details were completed, a leader to head the collection campaign was being sought. It quickly became apparent that all Board members had Rev. Bern-

were classified to the account of congregations and pastors, and reported accordingly, so that each congregation might receive proper credit. Frequent cross checking was necessary when it was found that monies intended for the Building Drive had inadvertently flown

into the Maintenance Treasury. District treasurers gave fine cooperation; Synod's leaders almost unanimously gave freely of their support and advice. Periodic reports were issued to districts. Exhibits were set up at key assemblies; the support of parochial day-schools and Sunday-schools throughout Synod was asked for and received; the Walther League lent its aid. No avenue of support was overlooked, and nowhere was a request for help refused.

A complete history of the Campaign, if only the committee could be prevailed upon to render it, would be indeed very interesting. A scrap book, containing an account of the Committee's activities since its inception shows the letters written to Synod's leaders. District authorities, men of prominence in the civic world, pastors, teachers, laymen, and congregations throughout the land, their responses, generally in hearty

terms of approval, also an example of each piece of literature published.

At least twice during the Campaign, Rev. Bernthal's labors were so heavy, combined with his normal congregational duties, that he was prevailed upon to rest. But even during these vacation periods he continued to arouse interest on behalf of the cause, and would return with glowing accounts of the reception received. Rev. Fahling was an able and efficient second in command during the whole campaign, and without his aid, surely much of the detail could not have been put into effect.

#### The Lord gave blessings

And the wonderful result? Donations ranging from a few pennies to the generous gift of Mr. and Mrs. Knudsen; participation by approximately eighty-six percent of Synod's roll of congregations; these are the tangible

results of the several years of hard work. More definitely these have been translated into the fine group of new buildings which must be seen to be fully appreciated, since no picture could do justice to the beauty and serviceability of the completed project. Besides there is an intangible awakened realization on the part of almost every congregation in the Synod's vast membership as to the important work being carried on at this school, and, we hope thereby an assurance of continued support. There is, too, a measure of satisfaction to be gained from the expressions of astonishment by non-Lutheran civic leaders that Lutherans can carry on a work such as this without appeals for public funds. Above all, there is a humble spirit of gratitude in every one to God who in His lovingkindness has made this glorious effort a fact.

Even though the appreciation

and gratitude of the Board of Directors on behalf of the Association of the Evangelical Lutheran Institute for the Deaf, to Rev. Bernthal and Rev. Fahling were never more adequately expressed, the happiness shown in the shining faces of the deaf children who will from now on reap the benefits of these worthy efforts, will probably provide these gentlemen with a much more lasting satisfaction than any more words we might express in tribute; and the memorial to their work can hardly have a more fitting reminder for the balance of their days, than the

#### PLEASE FORWARD

All contributions intended for the Building Fund to Rev. E. T. Bernthal, 19130 Bauman Ave., Detroit, Mich.

All contributions for the Maintenance Fund to our Cashier, Mr. Fred Auch, 3646 Mt. Elliott Ave., Detroit, Mich.



First Row (left to right)—Pastor F. A. Hertwig, Dr. Walter A. Maier, Pastor Harry Olsen, Dr. John W. Behnken, Pastor G. M. Krach  
Second row (right to left)—Mr. W. S. Kundsens, Mrs. Clara Elizabeth Knudsen, Mayor James Jeffries, Governor Luren B. Dickenson

permanent monument of fine buildings which today graces the grounds of the Evangelical Lutheran Institute for the Deaf.

FRED AUCH

## DEDICATION SERVICES ON PENTECOST SUNDAY

### Over Eight Thousand in Attendance

It was a joyful day when over eight thousand Lutherans of Detroit and vicinity assembled on Pentecost Sunday afternoon to dedicate to the glory of God the Gloria Dei Clara Elizabeth Knudsen Chapel and the other buildings of our Lutheran Institute for the Deaf.

The sermons, hymns and addresses were interpreted to the members of the Our Savior Deaf Congregation by the Rev. N. Paul Uhlig of St. Louis, Mo.

### Hope of the World

Dr. Walter A. Maier of St. Louis delivered the principal address in which he stressed the Christian duty of bearing one another's burdens.

Dr. John W. Behnken, brought greetings of Synod. He emphasized the thought that the Gospel of Christ which has been placed in the center of these buildings is the only hope of this storm-tossed world. The dedicatory act itself was performed by Pastor E. C. Fackler, the president of our Board of Directors.

The choral numbers were rendered by the General Motors Chorus under the direction of Mr. Eduard Ossko. The instrumental music was supplied by the Detroit Conservatory Orchestra directed by Mr. Walter Braun.

### Prominent Men in Attendance

The Honorable Luren B. Dickenson, Governor of Michigan, was present and brought the greetings of the State. He pointed out that generally the citizens expect the State to care for its underprivi-

leged children and that it was wonderful and refreshing to see a church body take an active part in such blessed work.

Similar expressions were voiced by the Mayor of Detroit and other prominent men who were present at this joyful celebration.

ADAM FAHLING

## SIXTY-SEVENTH ANNUAL FESTIVAL

### Readers of Advocate Cordially Invited

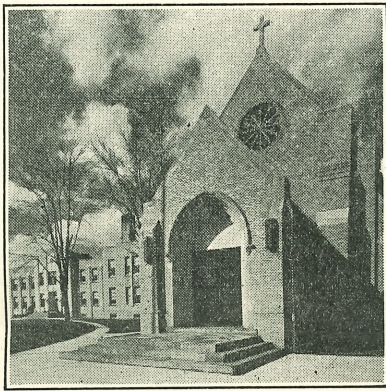
The day of our Annual Festival is again drawing near. This year we shall celebrate on June 16th. Plans are now being made to provide for both young and old a day of real festivities. The program for the day is as follows.

- 10:30 A.M. Divine Service
- 12:00 M. Dinner
- 1:00 P.M. Orchestral Music
- 2:00 P.M. Drills and Entertainment by the Deaf children
- 3:00 P.M. Divine Service
- 4:30 P.M. Baseball Game, Musical entertainment and games until 6:00 P.M.
- 5:00 P.M. Supper
- 6:00 P.M. Walther League Program
- 7:30 P.M. Concert by the Greater Detroit Choral Union.

This is one of the happiest days of the year for our deaf children. They marvel that so many people take such great interest in them and their welfare and they work hard preparing their bit to make this an outstanding day for you.

Reserve June 16th and spend the day attending divine services with us, inspecting the beautiful new buildings, visiting with friends and enjoying the varied program.

WALTER BELLHORN



A gem of a picture, also a gem of an institution for unfortunate and underprivileged children which needs your continued support

No. 1

## CALVARY LUTHERAN CHURCH FOR THE DEAF

Rev. J. A. C. Beyer, Pastor

1162 Marshall Ave.

St. Paul, Minnesota

May 11, 1940

Lutheran Institute for the Deaf,  
Care of Mr. J. A. Klein,  
Detroit, Michigan.

Dear Brethren:

In an extraordinary manner the Almighty God established a school for the deaf in Detroit more than six decades ago. Throughout the intervening years He has richly blessed the lives of large numbers of deaf people by means of that school. In fact, as you well know, He has used our school at Detroit as a means of leading uncounted thousands of deaf people on the Way to Life Eternal by using a graduate of that school to initiate our work among the adult deaf people of our country and of Canada.

God has thoroughly tried the sincerity and love and devotion of our Lutheran people to the spiritual interests of deaf children, and it seems proper to me to feel that He has placed His "Well done!" approval upon their faithfulness by raising up men and women through whom He has made the new buildings possible. With this He has taken away the last excuse from the parents of deaf children for not sending their children to a truly Christian school, where they will be brought up in the nurture and admonition of the Lord.

Thousand, thousand thanks unto our God, the Giver of every good and perfect gift! "Not unto us, O Lord, not unto us, but unto Thy name give glory, for Thy mercy, and for Thy truth's sake." Psalm 115.1.

Nor is that all. It is my firm conviction that our God has still more and greater tasks for us. There are many more deaf children in Lutheran and other circles whom our God would be pleased to see under the daily influence of His life-giving and soul-saving Word. While the Prophet Malachi (3:10) speaks of another matter in this verse, we can surely apply his words also to the present developments at our Detroit school: "Prove me herewith, saith the Lord of hosts, if I will not open you the windows of heaven, and pour you out a blessing, that there shall not be room enough to receive it."

May God continue to bless our school, its Boards, its Director and Faculty and its entire staff, so that ever-increasing numbers of deaf children may be brought to Jesus' waiting arms and be led to, and kept in, the saving faith by His Holy Spirit until the day when they shall depart from this sad world to be with Jesus forever and ever!

Fraternally yours,

J. A. C. BEYER

### CONGRATULATIONS FROM FAR AND NEAR

At the occasion of the dedication of our beautiful chapel and new building, congratulations and good wishes reached us from friends and educators throughout the country. Herewith we wish to acknowledge them all and express to the many friends of our Institute our sincere thanks and appreciation for their letters and message of congratulation and their kind words of encouragement.

Space does not permit to publish all messages received. However, we will herewith bring a few of them to the attention of our readers. Others will follow in subsequent issues of the Advocate.

*Missionary to the Deaf Rejoices with Us*

(Rev. J. A. C. Beyer's letter No. 1)

*Concordia Teachers' College, River Forest*

(Dr. Klinck's letter No. 2)

*English District President Writes*

(Rev. Martin Walker's letter No. 3)

*A Message from 80,000 Walther Leaguers*

(Prof. O. P. Kretzmann's Message No. 4)

*Wheatridge Send Best Wishes*

(Rev. E. J. Friedrich's Message No. 5)

*Wayne University Professor Writes*

(Mr. Lee's letter No. 6)

No. 2

## CONCORDIA TEACHERS COLLEGE

7400 Augusta Street

River Forest, Illinois

April 26, 1940

Mr. J. A. Klein, Director  
Ev. Luth. Institute for the Deaf  
6861 Nevada Ave., E.,  
Detroit, Mich.

Dear Brother Klein:

Permit me to extend the most hearty congratulations of the faculty, board, and students of Concordia Teachers College upon the completion of your new chapel and dormitory.

### THE DEAF CHILD'S ADVOCATE

Published Bi-monthly at Cleveland, Ohio, 2969 W. 25th St., in the interest of the deaf child by the Evangelical Lutheran Institute for the Deaf, 6861 E. Nevada Avenue, Detroit, Michigan.

#### EDITORIAL COMMITTEE

J. A. Klein, Director, 6861 Nevada Avenue ..... Managing Editor

All communications regarding the editing must be sent to the managing editor. All communications pertaining to changes of addresses must be sent to Circulation Department, 2969 W. 25th St., Cleveland, Ohio.

"Entered as second-class matter December 13, 1930, at the Post Office at Cleveland, Ohio, under the act of August 24, 1912."

Such work as yours among our handicapped children deserves the prayers and co-operation particularly of those educational institutions which are dealing with the more fortunate youth of our church.

May God's richest blessings continue to rest upon your staff and pupils and upon those whose generosity has made the dream of adequate buildings a reality.

Fraternally yours,  
ARTHUR KLINCK  
President

AK:K

No. 3

THE ENGLISH DISTRICT of the EVANGELICAL LUTHERAN SYNOD OF MISSOURI, OHIO, AND OTHER STATES

Office of the President  
Buffalo, N.Y.—May 10, 1940

For the Dedication Exercises  
Evangelical Lutheran Institute for the Deaf  
Detroit, Michigan.

Greetings in our Lord!

"Ephphatha." May all hearts be open to our holy joy of this blessed day. Let me join in your joy.

The Lord has in the past opened the minds and hearts of children and youths in your Institute to a saving knowledge of Himself as the Way, the Truth, and the Life.

By His Spirit He has opened the hearts and hands and purses of His children to supply the means for this new building and chapel.

Henceforth more children and youths may hear His powerful "Ephphatha"—so that the deaf will hear and the dumb speak to the glory of God and for their own salvation.

Very cordially,  
MARTIN WALKER

No. 4

CHICAGO, ILLINOIS

E. C. Fackler  
3940 Avery Ave.  
Detroit, Michigan.

As you dedicate your new building to the greater glory and service of God on this day of joyful thanksgiving, 80,000 Walther

Leaguers join in pledging the deaf mute institute their continued interest and support. May the Savior's gracious presence ever sanctify this building reared to His name.

PROF. O. P. KRETZMANN  
80,000 Walther Leaguers

No. 5

DENVER, COLORADO

The Lutheran Institute for the Deaf  
6861 Nevada Avenue,

Detroit, Michigan.

Our large sanitarium family at Wheatridge rejoices with you today and invokes God's richest benedictions upon your work of love. May you continue to be a blessing to many and a constant inspiration to all who have dedicated themselves to the cause of Christian charity.

E. J. FRIEDRICH

No. 6

WAYNE UNIVERSITY

Board of Education

Detroit, Michigan

College of Education  
Education of Handicapped Children

May 16, 1940

My dear Mr. Klein:

I recall when I visited the school some six or eight years ago the limited facilities you had, yet the excellent program you were carrying on. At that time we discussed the possibility of better buildings and you said you were working on such a program.

It is indeed heartening to see an institution so fine as yours coming into its own with the excellence of buildings and facilities you now have. I salute you on one of the finest institutional developments and program that I have ever observed, particularly in so short a time.

Most sincerely yours,

Mr. John J. Lee, Ph. D.  
General Adviser

JJL:EF

Contributions

ARIZONA

Mrs. Christian Hansen, \$1.00.—Total, \$1.00.

ARKANSAS

Trinity Luth. Sunday School of Pine Bluff, \$5.00; First Luth. Ladies' Aid Society of Hot Springs, \$3.00.—Total, \$8.00.

CALIFORNIA

Trinity Luth. Ladies' Aid Society of San Diego, \$2.50; Grace Luth. Jr. W. League Society of Los Angeles, \$5.00; Rev. A. Amstein, \$5.00; Cal. and Nevada District Treasurer, \$9.06; Immanuel Luth. Sunday-school of Riverside, \$12.00; N. N., \$1.00; Trinity Luth. Sunday School of Paso Robles, \$7.66; A. A. L. Branch No. 2223 of San Francisco, \$5.00.—Total, \$47.22.

CANADA

Alta. and British Columbia District Treasurer, \$1.00; Rev. T. Folkmann of Alberta, \$1.00.—Total, \$2.00.

COLORADO

Mr. and Mrs. W. Leben, \$1.00; Mr. and Mrs. O. Niernan, \$1.00; First English Ev. Luth. Church of Sterling, \$2.50; Mr. Raymond Henije, \$1.00; Katherine Spomer, \$1.00.—Total, \$6.50.

CONNECTICUT

St. Matthew's Luth. Church of New Britain, \$42.50.—Total, \$42.50.

FLORIDA

Luth. Sunday School of Pensacola, \$25.00.—Total, \$25.00.

ILLINOIS

St. John's Luth. Church of Libertyville, \$26.50; Mr. Albert W. Koenig, \$1.00; Mr. and Mrs. John King, \$1.00; Mr. and Mrs. Frank McKinney, \$2.00; St. Johanne's Luth. Sunday-school of Decatur, \$5.00; Wm. H. Gollan, \$5.00; Gottlieb Leipski, \$1.00; Charles Mor-

enz, \$1.00; Aug. F. Ollesch, \$1.00; John W. Salogga, \$1.00; Rev. E. C. Wegehaupt, \$1.00; Louis Jaschinsky, \$10.00; Jehovah Luth. Mission Guild of Chicago, \$30.00; St. Paul's Luth. Church of Niles Center, \$32.39; Magalene Bruhn, \$1.00; Mrs. Oliver L. Ratz, \$1.00; Miss L. Berndt, \$1.00; Rev. and Mrs. E. Golttermann, \$1.00; Immanuel Sewing Circle of Dundee, \$10.00; Leland Hallenberger, \$1.00; Mr. and Mrs. Gottfried Kipp, \$5.00; No. Ill. District Treasurer, \$421.07; Wilbur C. Falkenberg, \$1.00; Ruth P. Jordan, \$1.00; Mr. and Mrs. John Jass, \$5.00; Mrs. A. Busse, \$5.00; Mrs. Mary Tessoroff, \$1.00; Ralph K. Sievers, \$10.00; Central Ill. District Treasurer, \$26.46; Trinity Luth. Church of Danville, \$15.00; Mr. and Mrs. L. C. Estep, \$2.00; Mrs. Henry Franzen, \$3.00; Irene Anderman, \$1.00; Mr. and Mrs. A. F. Kuster, \$5.00; N. N., \$25.00; Mr. and Mrs. C. Heyer, \$1.00; Central Ill. District Treasurer, \$25.90; John W. Utesch, \$2.00; Mr. and Mrs. Walter Helmkamp, \$3.00; A. Fabry, \$3.00; Arthur Moenck, \$1.00; Mrs. Mary Pfeieger, \$5.00; Rev. Otto Massmann, \$1.00; Mr. and Mrs. Geo. Harch, \$1.00.—Total, \$702.32.

INDIANA

Mrs. Fred Hack, \$5.00; Rev. and Mrs. A. C. Cook, \$2.00; St. John's Luth. Sunday-school of LaPorte, \$10.00; Anna C. Trier, \$1.00; Mr. and Mrs. Wm. Behrmann, \$5.00; Mrs. Betty Behrmann, \$1.00; Central Dist. Treasurer, \$925.58; Central District Treasurer, \$192.75; Almira C. Mehrling, \$5.00; Mrs. L. D. Worden, \$1.00; Emmanuel Luth. Ladies' Aid Society of Tipton, \$3.00; Emmanuel Luth. Choir of Tipton, \$2.50; Leona Kunkel, \$1.00; Mr. and Mrs. Wm. Shaw, \$5.00; S. E. Nurenberg, \$1.00; John R. Rosenbaum, \$1.00; Miss Pauline Lienhoop, \$5.00; Rosina Hansing, \$1.00; Mrs. Floyd Kelly, \$5.00.—Total, \$1,168.33.

IOWA

Mr. and Mrs. Albert Rodenburg and Family, \$2.00; John Backes, \$1.00; Mr. and Mrs. E. J. Backes, \$1.00; Mr. and

F. J. Rieck, Mr. and Mrs. Geo. Backes, Mr. and Mrs. Otto E. Voeltz, L. J. Backes, Mr. and Mrs. F. U. Cade, Mr. and Mrs. Walter Ruff, \$3.25; Iowa District Treasurer, East, \$17.00; Iowa District Treasurer, West, \$4.00; Rev. Herbert Berner, \$1.00; Mr. Geisler, \$1.00; Iowa District Treasurer, East, \$81.07; Esther E. Rinz, \$1.00; Mr. and Mrs. W. Timmerman, \$2.00; Iowa Dist. East, \$26.59; Mrs. Geo. Glandorf and Ella, Williamsburg, \$1.00; Immanuel Luth. Church of Williamsburg, \$9.60; Iowa District Treasurer, West, \$32.75.—Total, \$183.26.

KANSAS

Rev. and Mrs. Rudolph Gehle, \$1.00; N. N., \$1.00; H. G. Thaele, \$1.00.—Total, \$3.00.

MICHIGAN

Mr. and Mrs. Otto Holthusen, \$1.00; Minnie Jordan, \$1.00; Mrs. Edw. Miller, \$3.00; Miss Hempel, \$200.00; Mrs. F. W. Stuby, \$1.00; Michigan Dist. Treasurer, \$1002.22; The Garrels and Diefenbach Families, \$8.00; Esther Kansler, \$2.00; Mr. Robert Hess, \$3.00; Mr. and Mrs. Harry Ziegler, \$2.00; Mr. and Mrs. F. Harris, \$2.00; Mrs. L. Kempthorne, \$2.00; Rev. and Mrs. C. A. Rook, \$1.00; The Franck Family, \$1.00; North Side Circle of Battle Creek, \$1.50; Mr. and Mrs. Martin Hubinger, \$1.00; Erwin Baumeister, \$20.00; Mrs. Herman Beier, \$1.00; Mrs. Chris. Volz and John Volz, \$7.50; Herbert J. Leppel and Family, \$2.00; Mr. and Mrs. H. E. Ziegler, \$2.00; Mrs. Erich Krueger, \$1.00; Carl F. Goetsch, \$1.00; Mr. and Mrs. August F. Lew, \$2.00; Mr. and Mrs. Gustav Ahlemann, \$2.00; Mr. and Mrs. C. H. Kuchenbecker, \$1.00; Mrs. E. Krug, \$1.00; Mr. and Mrs. E. F. Beuerle, \$1.00; Wm. Stamm, \$10.00; Viola Kursinsky, \$2.00; Our Savior for the Deaf Church of Detroit, \$161.45; Herman Jandt and Family, \$5.00; Fred Hundrieser, \$25.00; Mrs. Henry Eib, \$1.00; Mrs. Herman B. Kuhl, \$1.00; Mrs. A. C. Bunge, \$2.00; George Kohler, \$5.00; Mr. and Mrs.

Wm. Gayde, \$5.00; Sarah Gayde, \$5.00; Mrs. L. Henderson, \$2.00; Miss Meta Clabuesch, \$2.00; Mr. and Mrs. Wm. P. Reinbold, \$2.00; Irma M. Kluge, \$1.00; Mr. and Mrs. Carl Kluge, \$1.00; Miss Teresa Rector, \$1.00; Herman F. Schmidt, \$1.00; Mr. and Mrs. R. Hoerner, \$5.00; Miss Minnie Felzke, \$5.00; St. Mark's Ev. Luth. Sunday-school of Detroit, \$50.00; Mrs. Matilda Schmidt, \$1.00; Mrs. E. E. Guenther, \$1.00; St. John's Ladies' Aid of Adrian, \$3.00; Mr. and Mrs. M. Meier, \$5.00; N. N., \$50.00; Mr. and Mrs. John Oboromeske, \$5.00; Paul Lukaszewicz, \$2.00; Mr. and Mrs. Peter Bullinger, \$3.00; Mrs. J. C. Muck, \$1.00; Mich. Distr. Treas., \$19.00; Mr. and Mrs. W. C. Schutzler, \$5.00; Walter Kisser, \$1.00; Mrs. Victor Hannewald, \$1.00; Mrs. D. Weick, \$1.00; Sheila M. Riddell, \$1.00; Bertha Schriever, \$2.00; Mrs. Mamie Reinke, \$1.00; Mrs. D. Murray, \$1.00; Lauretta and Eleanor Klemm, \$2.00; Mr. and Mrs. G. Umbreit and Miss Elsie Umbreit, \$3.00; Mrs. Eleanor Fiedler, \$5.00; Mr. and Mrs. Ezra Hannewald, \$5.00; Mr. and Mrs. R. W. Schave, \$5.00; Mr. and Mrs. F. Schade, \$1.00; J. Radke, \$1.50; Deaconess Marie Twenhafel, \$2.00; Betty Jean and Deanna Bauss, \$2.00; Ladies' of the Wyandotte Sewing Circle, \$3.00; N. N., \$1.00; Christ Brady Sunday-school of Chesaning, \$5.35; Miss Ella Lehman, \$10.00; Rev. and Mrs. M. L. Luecke, Mr. and Mrs. H. A. Luecke, Mr. and Mrs. C. Selby, \$5.00; Bethlehem Sr. W. League, Trinity Sr. W. League, Redeemer Y. P. Society of Saginaw, \$8.92; Mrs. Anna Stokes, \$1.00; Epiphany Luth. Church of Detroit, \$1.50; St. Paul's Luth. Sunday-school of Albion, \$18.00; Emmanuel Luth. Sr. Choir of Flint, \$5.00; Mr. and Mrs. L. G. Weber, \$2.00; Lawrence J. Heidenrich, \$5.00; Luth. Ladies' Aid for the Deaf of Mt. Clemens, Macomb County, \$5.00; Mr. and Mrs. F. A. Luke, \$1.00; St. Mark's Luth. Sunday-school of Detroit, \$5.00; Zion Ev. Luth. Sunday-school of Chesaning, \$6.00; The Redmann Family of Manistee and De-

