


The Deaf Child's ADVOCATE



Volume 36

MARCH, 1966

Number 2

NEW WING DEDICATED

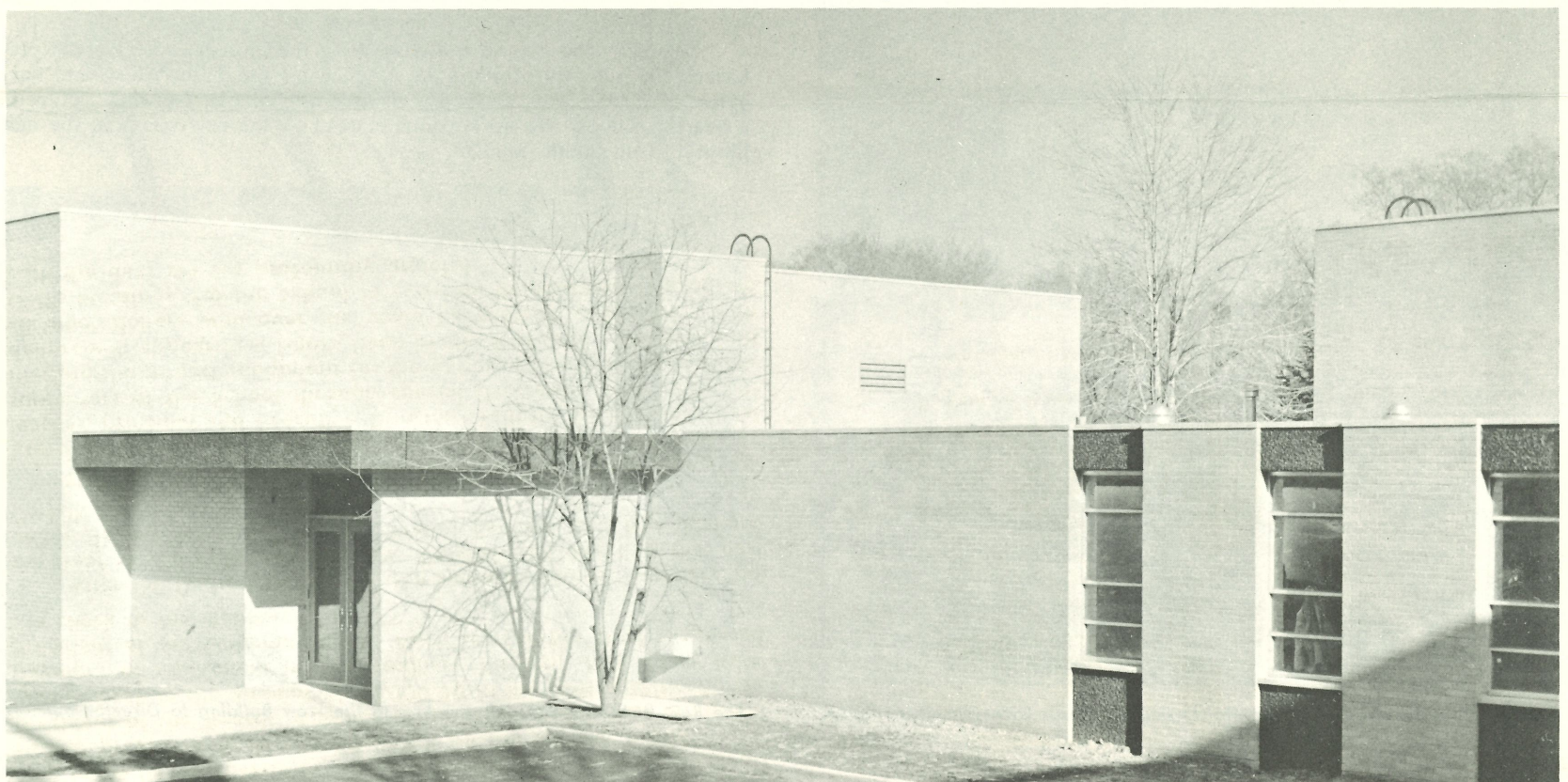
The words "Now Thank We All Our God With Heart And Hands And Voices . . ." rang through the school's new Gymnasium as the overflow assembly sang the opening hymn at the Dedication Service on Sunday afternoon, January 30. The Preacher for this special service was the Rev. Dr. Oliver R. Harms, president of the Lutheran Church-Missouri Synod. The Rev. Dr. E. T. Bernthal, Rev. Carl Nietzke and Rev. Edwin Rossow officiated and the Rev. N. E. Borchardt and Mrs. Stephen Klein interpreted for the Deaf. Musical selections were offered by the Lutheran Choralists and the deaf children of the School. Faculty member Miss Edith Ulbrich served as organist. Following the service, Dr. Klein, Rev. E. Weber, Pres. of the Michigan District, Rev. Edward N. Schulte, a counselor of the English District and Rev. Henry A. Quitmeyer, former teacher of the School extended congratulations and briefly addressed the audience.

Immediately thereafter, the key to the new building was officially presented to Director Bellhorn by the Rev. E. Schildt, vice-president of the Board. Another presentation made that afternoon was a check in the amount of \$4,000.00 to be used specifically for payment of equipment in the Auxiliary Kitchen. Mrs. Clara Rast, President of the Lutheran Ladies' Auxiliary for the Deaf presented the check to Mr. Bellhorn.

After the Dedication Service, the Lutheran Ladies' Auxiliary for the Deaf served light refreshments. Co-chairman directing this part of the day's festivities were Mrs. Walter Bellhorn and Mrs. Richard Corkill.

The new building was named the "John A. Klein Wing" in grateful tribute to Dr. Klein who served the School for 54 years as teacher, principal and Executive Director. Faithful friends and loyal supporters of the School through special dedicatory gifts provided the furnishings and equipment for the various rooms. A list of these donors will appear in a future issue of the Advocate. To these and all other donors who over the years have made it possible, with God's blessings, for the School to carry on its educational program with the deaf we are profoundly grateful.

The J. A. Klein Wing



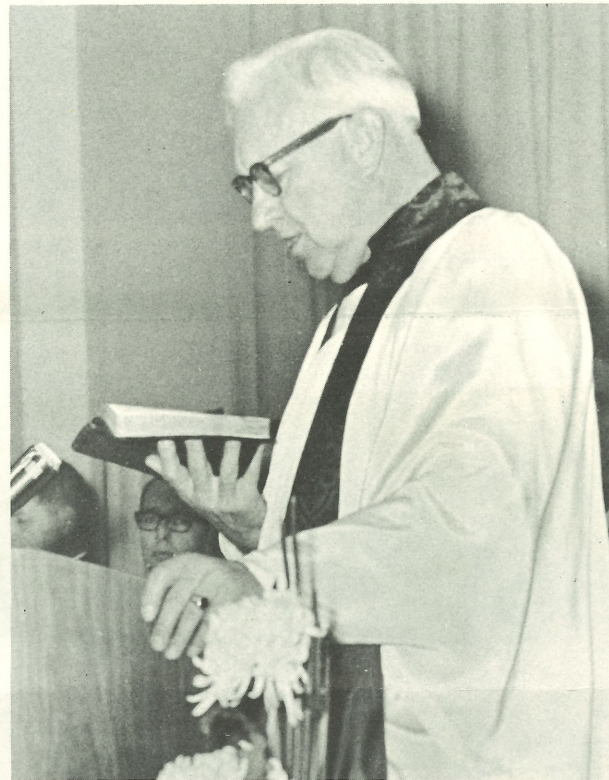
THINK ON THESE

The Pledge of Faith and Loyalty

I vow to bear in mind that God in Christ redeemed the world and bought me with His precious blood and thus shall live my life in grateful service to my Church and to its Lord, and all mankind whom He so dearly bought.

* * * * *

I pledge allegiance to the flag of the United States of America and to the Republic for which it stands, one nation, under God, indivisible with liberty and justice for all.



Dedication Preacher — The Rev. Oliver R. Harms, D.D.

President of the Lutheran Church — Missouri Synod



The Gymnasium — filled to capacity on Dedication Day.



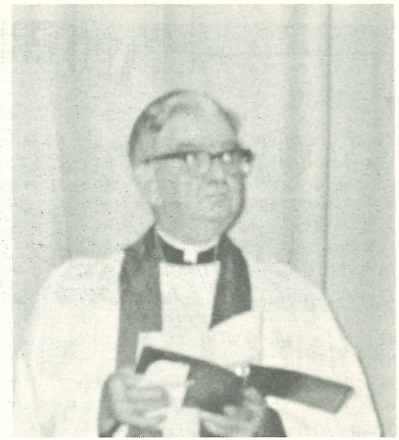
On Stage: L. to R. Mrs. Stephen Klein, Rev. N. E. Borchart, Rev. Carl Nietzsche, Rev. E. Rossow, Principal, Herman Holste, Rev. E. Schildt, Rev. E. Schulte, Director Walter Bellhorn, Rev. E. Weber, Dr. E. T. Bernthal, Dr. J. A. Klein and Dr. Oliver R. Harms.



The deaf children directed by Mr. Holste singing "Jesus Loves Me, This I Know."

DEDICATION REVIEW IN PICTURES

The Rev. Dr. E. T. Bernthal, Pastor of Epiphany Lutheran Church, Detroit, and a member of Synod's Board of Directors, dedicates the New Wing.



Dr. J. A. Klein, in whose honor the new Wing was named, addresses the assembly after the Dedication service.



DREAM BECOMES A REALITY

From ground-breaking to the present time our new wing has grown out of "nothingness" into a thing of beauty and dignity. There were days that tested nerves, strained by thunderous sounds of machinery, the discordant buzz of drilling and the pungent fumes of paint. These are forgotten in the presence of beautifully equipped classrooms and areas for pleasurable, as well as functional activities. Through the long period we may well have learned the *value of time*, the *virtue of patience* and the *joy of creating*, the *success of perseverance*, the *worth of cooperation* and the *meaning of gratitude*. Miss Grace Mannen, Supervising Teacher.

* * * * *

The John A. Klein Wing is a real joy to the teachers. The pleasant colors, ample storage space, day-lighting, broad tackboard areas, magnetic chalkboards, new furniture, and additional facilities have given a new life to teaching. It's like a new suit of clothes which somehow demands a higher level of performance and the teacher tries to respond with greater creativity, resourcefulness, and competence. Miss Helen Szajna, Teacher.

* * * * *

We enjoy the gym in the New Wing the most because we can play basketball, volleyball, rollerskate, practice for the Track Meet, and have gymnastics every day. The new classrooms make us feel that we are in a hearing school. We are anxious to read all the new books in the new library. Tom Smith, Student.



The Rev. E. Schildt presents the key to the New Building to Director Bellhorn.

the LETTERBOX

Dear Brother: Over the years I have watched with interest the work and development of the Lutheran School for the Deaf. Certainly this is a monument to the love and faith of many dedicated people. May I add my word of congratulations and good wishes, to many others which you will receive, as you dedicate the new building to the glory of God. May I bespeak for you the continued benediction of God on high. With sincere greetings, Rev. F. A. Schole, President, Lutheran Church — Canada.

Dear Friends: The members and pastors of Gloria Dei Lutheran Church invoke God's continued blessings upon the dedication of the John A. Klein Wing for the Lutheran School for the Deaf. By means of this addition, may you realize the dream of the founder, that the story of Jesus Christ might be given to more and more young boys and girls. God bless you in your service to Christ. Respectfully yours, Rev. Richard F. Jesse — Detroit, Michigan.

Dear Friends in Christ: In behalf of The Lutheran Center Association of Greater Detroit, it is our privilege to express the congratulations and joy of your fellow Christians throughout the metropolitan area upon the completion and dedication of the new "John A. Klein Wing." We commend you for so appropriately naming this new facility, as well as for your constant and untiring efforts over the years in making our Lutheran School for the Deaf not only a school of real educational excellence, but a ringing voice for Jesus that has been wondrously heard by otherwise, "unhearing" children. On this historic occasion, our prayers join yours in gratitude to a gracious God and for His continued blessing upon the ministry of our Lutheran School for the Deaf. In His Name and at Your Service, The Lutheran Center of Greater Detroit Kenneth M. Lindsay, Executive Director, Clement W. K. Lee, Ass't. Exec. Dir. Dear Director Bellhorn: Your fellow Christians at Our Shepherd Lutheran Church, Birmingham, rejoice with you on the dedication of the new John A. Klein wing of your facilities. It is only proper that this new wing be named after the man who gave so much of his life and talent to the school you serve. May our Lord continue to bless and guide you and your staff into performing with ever greater proficiency that tremendous challenge of teaching those physically handicapped in hearing and speaking! Yours in Christ, Our Shepherd Lutheran Church, H. G. Allwardt, Pastor, F. W. Kauth, Asst. Pastor.

Dear Mr. Bellhorn: As you, your Board of Directors, and your faculty prepare to dedicate the new John A. Klein wing to your very fine school, we would want you to know that our entire Concordia family rejoices and gives thanks to God with you. There is no question that in the past years of your school's history, it has brought blessing to many and the addition of a new wing will be of great assistance to you in teaching the wonderful message of Jesus more effectively and to more of the young people of our church. May God's grace and rich blessing continue to come to you and to your school as you labor only in the King's interest. Yours in Christ, Rev. Eugene L. Krentz, Asst. to the President, Concordia Lutheran Junior College.

Dear Walter: Thank you for your invitation to attend the dedication service of the John A. Klein Wing of your school building next Sunday, January 30. I am grateful for your invitation and will be delighted to come. Mrs. Lee and my daughter, Mary Ellen, will accompany me. Cordially and sincerely yours, John J. Lee, Chairman, Dept. of Special Ed. and Vocational Rehabilitation, Wayne-State University.



Mrs. Clara Rast, President of the Lutheran Ladies' Auxiliary for the Deaf, presents a check of \$4000.00 to Director Bellhorn for equipment in their new Auxiliary Kitchen.



Preparing refreshments in the New Kitchen for the Dedication Day visitors.



Members of the School's Board of Education: L. to R. The Rev. N. E. Borchart, Our Savior (Deaf) Lutheran Church; The Rev. Carl Nietzke, Emmaus Lutheran Church, Chairman, and The Rev. Edwin Rossow, Mt. Calvary Lutheran Church.



Members of the School's Board of Management—L. to R., Herbert Schoenberg, B. C. Schumacher, Elmer Engel, Werner Knack, Rolland Wilkening, Fred Auch, Sr. and The Rev. W. LeRoy Biesenthal, Trinity Lutheran Church, Utica, Mich.

PRINCIPAL DECLINES CALL

In January Mr. Herman Holste, principal of our School, who is working full time on his Doctorate program, received a Divine Call from Synod's Board for Foreign Missions to establish a Christian Education Program for the Deaf in the Hong Kong area. It would have entailed working with children and adults both in academic and vocational education and training. On the day of Dedication he announced his decision to decline the Call for which the School is truly grateful.

FORM OF BEQUEST

I give, devise and bequeath to the Lutheran School for the Deaf, 6861 Nevada Ave., Detroit 34, Michigan, a duly organized and incorporated, non-profit corporation, the sum of \$..... and/or the following described real estate and/or stocks and bonds.

The receipt of the Treasurer or Executive Director of said corporation shall be sufficient discharge to my executor for same.

Published quarterly by the Lutheran School for the Deaf, 6861 East Nevada Ave., Detroit 34, Michigan.
 Entered as second class matter at the Post Office at Detroit, Michigan.
 EDITOR — Walter Bellhorn, 6861 E. Nevada Ave., Detroit 34, Michigan
 SCHOOL BOARD — Rev. N. E. Borchardt, Rev. C. Nietzke, Rev. E. J. Rossow,
 All communications regarding the editing must be sent to the editor.
 ALL ADDRESS CHANGES must be sent to the Lutheran School for the Deaf,
 6861 East Nevada Ave., Detroit 34, Michigan.

mm

SECOND CLASS
 POSTAGE PAID
 AT
 DETROIT, MICH.



Pupil Carl Frels finds room galore in the new bedroom clothes closets.

Activities In The New Building



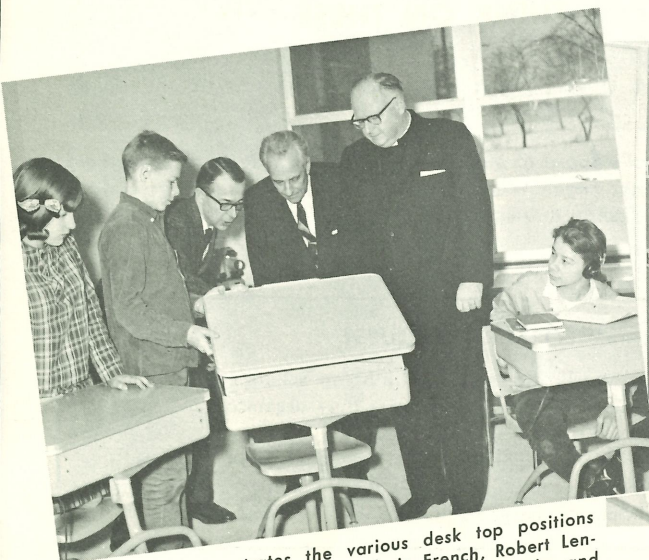
Several Board members greeted upon arrival for the Dedication Service. L. to R.: The Rev. N. E. Borchardt, Director Bellhorn, Principal Holste and the Rev. Carl Nietzke.



Finding ample desk storage is a thrill as these youngsters take over a new classroom. Seated: Laura Marzetti, Utica, Mich. and Deborah McKenney, Lansing, Mich. Standing: Susan Haselhuhn, Detroit, Valerie French, Tecumseh, Mich., and Robert Lenderman, Pensacola, Fla.



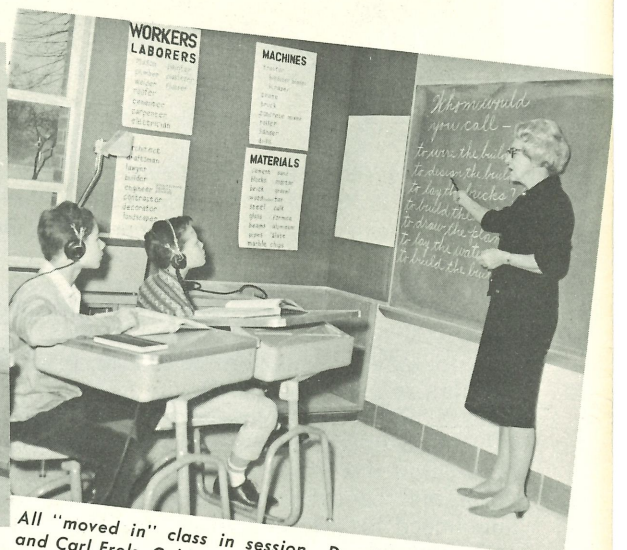
Director Bellhorn, right, demonstrates the versatility of the new folding Stage in the Gym. to Miss Szajna's class and several Board Members.



Principal Holste demonstrates the various desk top positions available to the students. L. to R. Valerie French, Robert Lenderman, Mr. Holste, The Rev. Borchardt, The Rev. Nietzke and Dennis Kozak.



Arranging a display on the large tack board space in their new classroom. — L. to R. Valerie French, Susan Haselhuhn, Robert Lenderman and Miss Helen Szajna.



All "moved in" class in session. Dennis Kozak, Windsor, Ont. and Carl Frels, Cable, Wis. watch intently as Miss Szajna defines vocabulary used in the building industry.