



The Deaf Child's ADVOCATE

Annual Report May, 1986

Lutheran School for the Deaf — Detroit, Michigan 48234-2983

Purpose

By the grace of God the Lutheran School for the Deaf helps students with special learning needs to:

Know, love, and serve Jesus, our Savior;

Understand their skills and weaknesses better;

Practice strategies to make learning more effective and personally satisfying; and

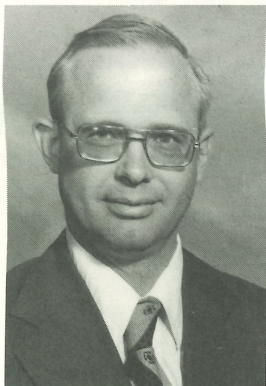
Prepare themselves for successful mainstreaming.

Students are helped to learn in two ways: first, directly here on the Nevada Avenue campus; and second, individually through assisting local schools in providing special education in their own buildings.

God's blessings continue to permit the school to serve more students with special learning needs. This year we are serving 255.

That is a 24% increase over the 205 students assisted last year.

The historic deaf program continues to be a very valuable and good program in the lives of the children involved. In addition to American students we also have two students from the Bahamas and one from Nigeria.



The Detroit Lutheran Special Education Program continues to grow. There are five sections to it. Here on campus there are three divisions. The programs are for students with specific learning disabilities, for students who are educably mentally retarded, and for students who are gifted or creative. The fourth division includes five satellite programs providing resource rooms for students with specific learning disabilities at Holy Cross, Detroit; St. Paul, Farmington Hills; Trinity, Utica; St. Paul, Sterling Heights; and Trinity, Mt. Clemens. Finally we are operating a high school program with two faculty members at Lutheran High East and one at Lutheran High West.

The program in Chicago continues to grow and progress. During this past year we have had five full time faculty members serving students with special learning needs in ten different congregations including Christ the King, Pilgrim, St. John's, Jehovah, Trinity, Hope, and Zion, Chicago; St. Paul's, Melrose Park; Immanuel, Richton Park; and St. John's, Lansing.

Ephphatha Institute was founded to assist congregations, pastors, and teachers with children with specific learning needs. During this past year we responded to 21 different requests from individuals all over the United States and the Bahamas in attempting to assist them with

the students that they have in their local area.

God has richly blessed us with a very dedicated and effective faculty and staff who work hundreds and thousands of hours to share their faith with the students as they help them learn.

A very special thanks to each of the partner schools in metro-Detroit and in Chicagoland.

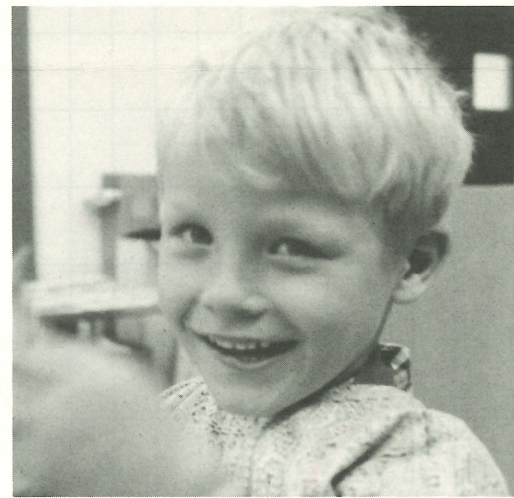
We praise God for the wisdom and foresight of the board of directors who have worked so long and so faithfully to assist larger numbers of students.

We thank God that all of this ministry is possible because of *YOUR* love, prayers, and donations.

Rev. Dr. Rodney R. Ryneanson



Francis Anwana from Lagos, Nigeria, Africa and Nancy Lochmeyer of Bay Village, Ohio in their classroom.



Joseph Borelli of Detroit, Michigan smiles in response to the photographer's camera.



Education Report for 1985-86

General education is beginning to recognize the need for more appropriate methods of teaching handicapped children. As a result, we receive more requests to provide help to more children and to open additional classrooms within the regular schools. Helping students communicate allows them to grow in Christian knowledge and to accept and share the mission of the school, the gospel of Jesus Christ.

We now provide special programs at 14 Lutheran elementary schools and two Lutheran high schools in addition to the 13 classrooms at the Detroit campus. Every day 255 children receive special instruction while they experience success through the dedicated efforts of our exceptionally fine staff of 28 teachers. God truly has continued to bless our efforts of "feeding His lambs."

Report of the Board

The 12 active members of the board of directors are responsible for administering the school. This year they met five times as a full board and numerous other times as members of the four operating committees.

The committees are: 1) Education and Policy, 2) Finance and Investment, 3) Resource & Development, 4) Personnel.

Board members include: Paul Quitmeyer, President; Rev. W. Fluegge, Vice-President; Allen Helland, Secretary; Elmer Engel, Treasurer; Terry Davis; James Hoerberling, attorney; Walter Kaufmann; Rev. A. Prouty; Rev. J. Reusch; Donald Rutter; and Rev. J. Streit. There is one vacancy since Bruce Fisher resigned for business reasons.

Honorary board members include: Herman Auch, Rev. R. Bernthal, Rev. J. Gagern, Carl Middeldorf, Rev. E. Rossow, and Rolland Wilkening. Our thanks to them.

INCOME

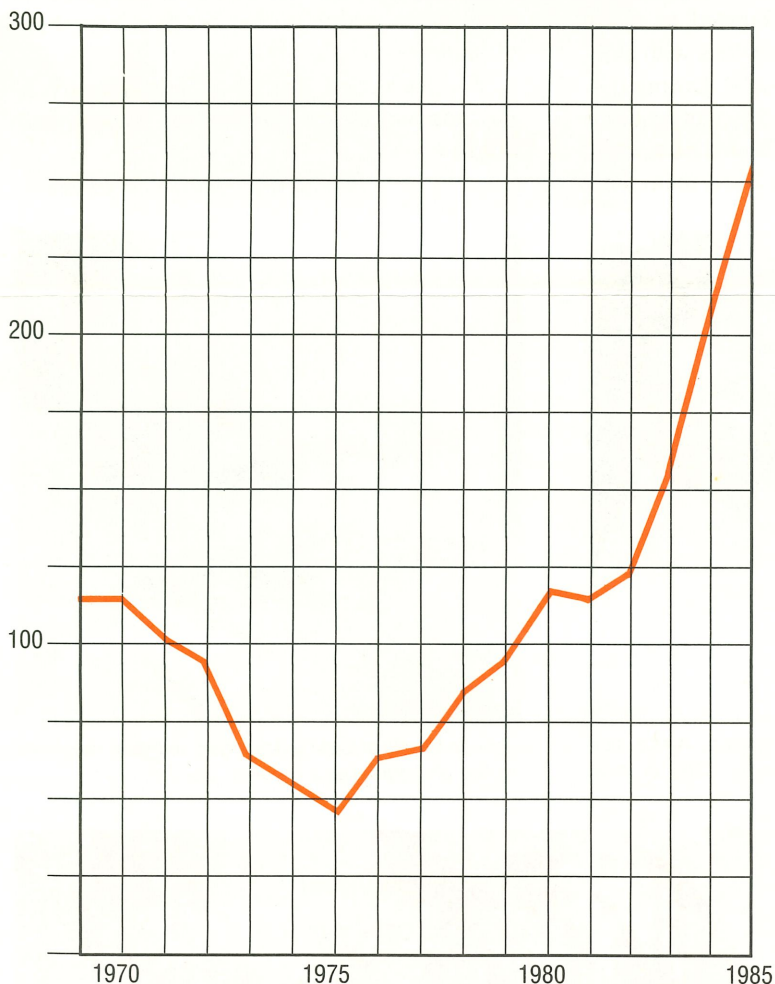
Donations: General.....	\$ 357,952
Specific	28,771
Memorials	24,740
Deferred gifts	448,503
Income from Endowment Fund.....	356,489
Tuition	153,287
Donations in Value.....	9,906
Miscellaneous	14,023
	<u>\$1,393,671</u>

EXPENSES

Salaries	\$ 755,042
Office	15,416
Publicity	66,119
Fund Raising.....	26,866
Repairs, Maintenance.....	30,202
Auto.....	7,548
Food.....	30,911
Utilities	73,867
Education.....	29,701
Specific donations expended	27,259
Retirement benefits.....	13,042
Depreciation	79,995
Miscellaneous	16,793
Transfer to Endowment Fund	220,910
	<u>\$1,393,671</u>

Student Enrollment

(1969 - 116 students — 1985 - 225 students)



1985 Student Enrollment

		%
High Schools	42	16.47
Hearing Impaired.....	13	5.09
Detroit Spec. Ed. Campus	86	33.73
Detroit Spec. Ed. Satellites	57	22.35
Chicagoland	57	22.35
Total	255	

Staff

There are 53 staff members working to assist the students.

Detroit Special Education.....	29
Deaf	12
Ephphatha Institute	2
Chicagoland Special Education	5
Administration	5



Mrs. Meta Masch assembles and sorts mailing while her husband, Fred labels letters.



Mrs. Helen Branion and Mrs. Ruth Leidel assist in the task of mailing 160,000 copies of the Deaf Child's Advocate.

Volunteers

Throughout its 113 year history, the Lutheran School for the Deaf has depended greatly on the services of many volunteers. The parents of each of our children annually contribute 20 hours of volunteer time in various service projects around the school. This can vary from cutting and counting Campbell soup labels, assisting in typing and other office duties, and building and grounds maintenance projects.

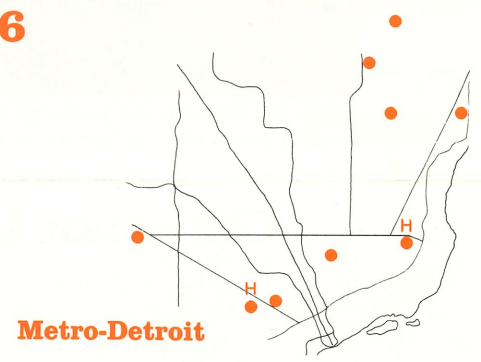
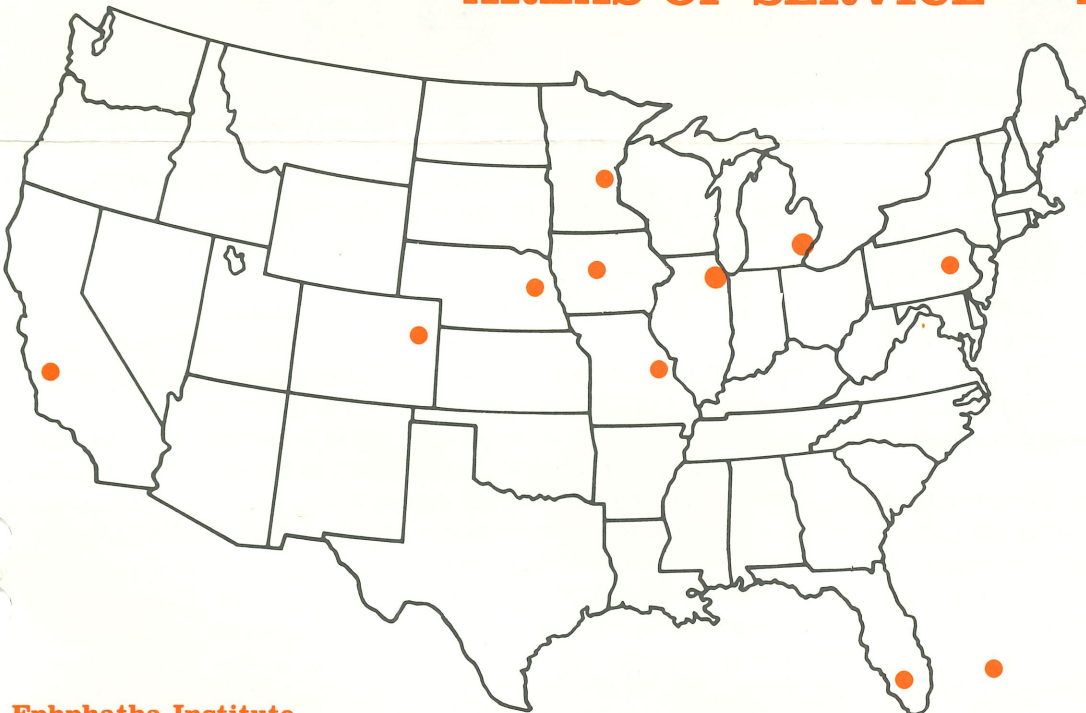
With a 20-acre campus the Lutheran School for the Deaf has many jobs which need to be filled by volunteers and include tree trimming, rose pruning, flower planting, and even snow shoveling in winter months.

In addition to these types of volunteer duties we have other volunteers such as those pictured above. Mr. Victor Redman and Mrs. Jane Tornow frequently dress as they appear here for the amusement of not only the children but also the adults who attend our various festivals and functions. Their many hours and years of service are greatly appreciated, and we wish to recognize them as volunteers in the true spirit of the word.

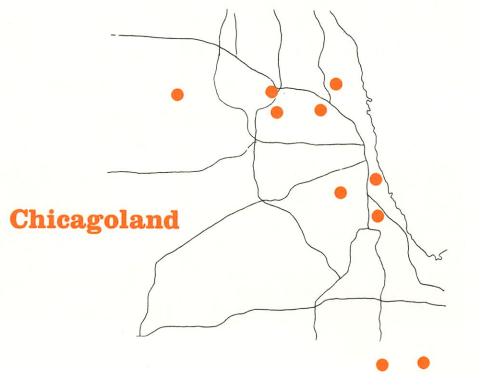


Mr. Vic Redman and Mrs. Jane Tornow prepare to meet guests at the Lutheran School for the Deaf festival.

AREAS OF SERVICE — 1986



Metro-Detroit



Chicagoland

Ephphatha Institute

Offering a resource center to parishes, pastors, and schools to provide advice and materials for the religious education of "uncommon" students.

SECOND CLASS
POSTAGE PAID
AT
DETROIT, MICH.

THE DEAF CHILD'S ADVOCATE — USPS 150-480
Published quarterly by the Lutheran School for the Deaf, 6861 E. Nevada,
Detroit, Michigan 48234
Editor — William H. Harlow, Resource Cultivator
Managing Editor — Rev. Dr. Rodney R. Rynearson, Executive Director
Telephone (313) 368-1220
Send all communications regarding the Editing, and
ALL ADDRESS CHANGES to the above address.



Gordon Eder, a student of the school, plays the piano for a program.



Gloria Dei chapel is the scene for children's chapel worship as well as the setting for other group worship.

Christian Love

Here you see Reverend Dr. Rodney Rynearson, executive director of the Lutheran School for the Deaf, leading worship in our chapel at the anniversary celebration of the Lutheran Ladies Auxiliary for the Deaf.

The ladies regularly have projects of various types to benefit the school. These ladies work many long hours not for their own glory but for the benefit of the children here. We want to thank them for their devoted service and pray that the Lord will be merciful to them as they continue to work in His kingdom.

The Gloria Dei chapel is the site of weekly chapel services on Friday mornings attended by the entire staff and student body of the Lutheran School for the Deaf. Friday chapels are led by faculty members who prepare visual aids for the children's understanding. Slides and hymns are prepared for the appropriate language level of the children. We encourage all staff to attend these chapel services as we feel that the hearing of the word is essential to their ongoing spiritual life. It is our hope that each staff member would feel that they are an important part in the overall ministry of the school and that no person's role is any greater or any less than any other. In so doing, anyone who comes in contact with our staff will be understanding of the full impact of the ministry here at the school.

Remodeling

We have basically completed the remodeling program started last summer. Ceilings have been lowered and the lights have been installed. New floor coverings have been placed on the first floor. The new library is a wonderful asset. The conference center is just about ready to be opened and we hope that in the near future local organizations and groups will use it for conferences.

We continue to rejoice in the use of the building downstairs by the Lutheran Braille Workers in their production of the large print German devotional book.

We are pleased to report that during this year the office of the Lutheran Credit Union of Greater Detroit moved into our building and is using one of our rooms.

Thanks be to God for all of the blessings that we receive through the property.

Resource & Development

The Resource & Development Committee of the board of directors of the Lutheran School for the Deaf meets regularly to determine the success and progress of various fund raising and public relations aspects of our ministry.

The Deaf Child's Advocate is our major outreach and information piece. We maintain a mailing list of approximately 180,000 names of friends and supporters who continue to be the major source of income for the school. Over 85% of our income is a direct result of the ongoing support of this group of people. We would encourage more and more people to avail themselves of the opportunity of having representatives of the Lutheran School for the Deaf come to their congregations or organizations to explain the ministry of our school as well as the need for support of various types of organizations.

While individuals make up the greatest percentage of contributions, the support of service clubs and organizations outside the church continue to be an important segment of growth in our income. Deferred giving through wills and estate planning are important to our ongoing future development program, and we encourage each person who is involved in planning his or her estate to consider the Lutheran School for the Deaf and its ministry to God's special children while they determine the recipients of that estate.