

The ADVOCATE

for Students with Special Learning Needs

Volume 57 Issue 1 Lutheran School for the Deaf — Detroit, Michigan 48234-2983 Spring 1987
313-368-1220

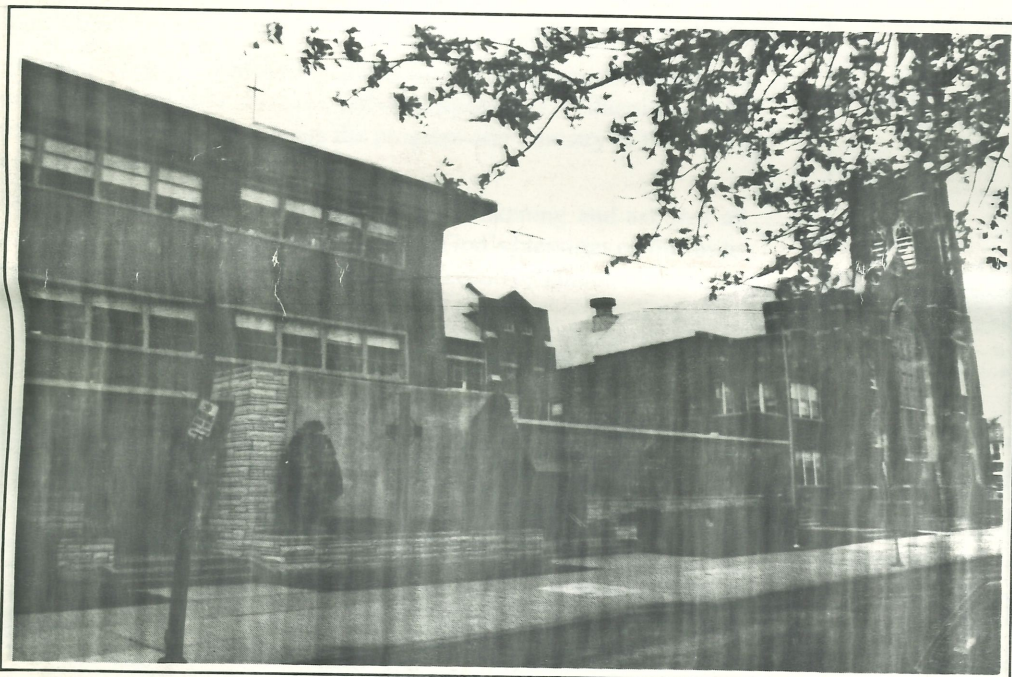
Chicagoland Lutheran Special Education

Chicagoland Lutheran Special Education is a new outreach of the Lutheran School for the Deaf. For the past 4 years, the Lutheran School for the Deaf, in cooperation with the Northern Illinois District of the Lutheran Church-Missouri Synod has begun programming for children with special learning needs in the Lutheran schools in the city of Chicago.

The program is supervised in Chicago by Mrs. Linda Mikottis, principal for Chicagoland Lutheran Special Education. Children are

being evaluated by Mr. Roger Spath of our staff who is housed at Concordia College, River Forest, Illinois.

We anticipate continued growth and support of this program with the Northern Illinois District. At the present time plans are being made for the expansion of this program in the 1987-88 school year. We ask that all of our readers continue to pray for the ministry in Chicagoland as well as the staff and the children participating in this program.



Ashburn Lutheran School

◆ ◆ ◆
Currently the enrollment in this program is:

Ashburn	Krone	6
Christ the King	Agrilab	7
Hope	Krone	7
Immanuel/R.P.	Johnson	3
Johovah	Jehovah Kuehl	3
Pilgrim	Homein	8
St. John		7
St. John/Lansing	Johnson	3
St. Paul/Melrose Park	Letorman	1
Trinity	Kuehl	4
Zion Chicago	Agrilab	4
Zion North	Mikottis	2

Beck Scholarship

Some years ago the Lutheran School for the Deaf was the recipient of legacy funds from the estate of Freda M., Elsie M., and Hildegard R. Beck. The total funds on deposit in the Endowment Fund of the Lutheran School for the Deaf total \$13,357.77. The interest earned on this fund will be disbursed during 1987 to needy children.

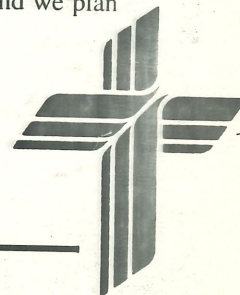
Future issues of the Advocate for Students with Special Learning Needs will include an updated story of the recipient of these funds. We invite others to participate in this or other scholarship programs from funds that they may wish to contribute to the Lutheran School for the Deaf or to arrange for a deferred gift through their estate planning. Please contact Mr. Harlow, the resource cultivator at the school, for help in arranging such gifts.

Ephphatha Award

The Ephphatha Award, given annually by the Lutheran School for the Deaf, will be presented sometime during 1987. Nominations are presently being received for this award and applications are available from Mr. Rolland Wilkening, Interim Executive Director of the school. Mr. Wilkening may be contacted at Lutheran School for the Deaf at 313-368-1220 or by writing him at 6861 East Nevada, Detroit, Michigan 48234-2983.

We anticipate many nominations being presented, and we plan on making the award sometime during the summer of 1987.

If you have any questions concerning this award, please contact Mr. Wilkening at the above address.



Rolland M. Wilkenning Appointed Acting Interim Executive Director



Pastor Rodney R. Rynearson has accepted a Call to the position of Secretary of Missions to the Deaf and Blind with the Lutheran Church-Missouri Synod in St. Louis. The board of directors at the Lutheran School for the Deaf have appointed Mr. Rolland M. Wilkenning, a member of the board, as acting Interim Executive Director. Mr. Wilkenning is an active Lutheran layman, having retired from the Barton-Malow Company, a construction firm in the Detroit area.

While nominations for the position of executive director have been open since September, the board is continuing to interview and screen candidates for this position. Mr. Wilkenning is working on a day-to-day basis with the administrative staff for the ongoing operation of the ministry of the school.

We pray that God will be merciful to the school during the vacancy in the positions of executive director, and we pray that Mr. Wilkenning will be successful in his efforts at moving the program and ministry of the school forward during that vacancy.

We thank God for the blessing of Mr. Wilkenning and ask that all readers of the Advocate join with us in asking God's blessings on him as he continues to act in the capacity of Interim Executive Director.

1986 Soccer Team



Pictured above is the Lutheran School for the Deaf soccer team for 1986. The team was victorious as you can see by the trophy in the center of the picture being held by 2 team members. They were champions of the East Side Lutheran Athletic Conference, and they were coached by Mr. Allen Reinke and Mr. Mark Brower.

DESIGNATED OFFERING FOLDER
Our new folder can be used for anniversaries, birthdays, and other joyous occasions. We will gladly send you free as many as you request.

Alumni Letter

Dear Friends:

Here are some Campbell coupons. Some are mine and some were given to me to send to you. Some were torn. I had to tape them. Hope everyone is OK. I'm Curtis' mother. He used to go to school in 1942 for 10 years. He's 47 now and works for John Deere. Keeps their airplane clean. He has worked for the Daily Times for 15 years till the computers came along. He had to find another job.

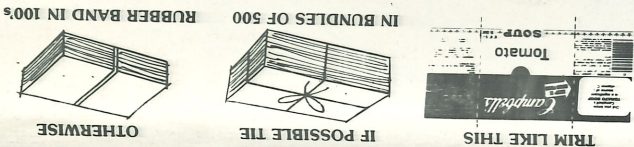
Hope you will receive these OK. I am saving more and will again send them as soon as I have plenty.

Sincerely,
Clara L. Ketelsen

LABELS TO SAVE...



HOW TO SEND



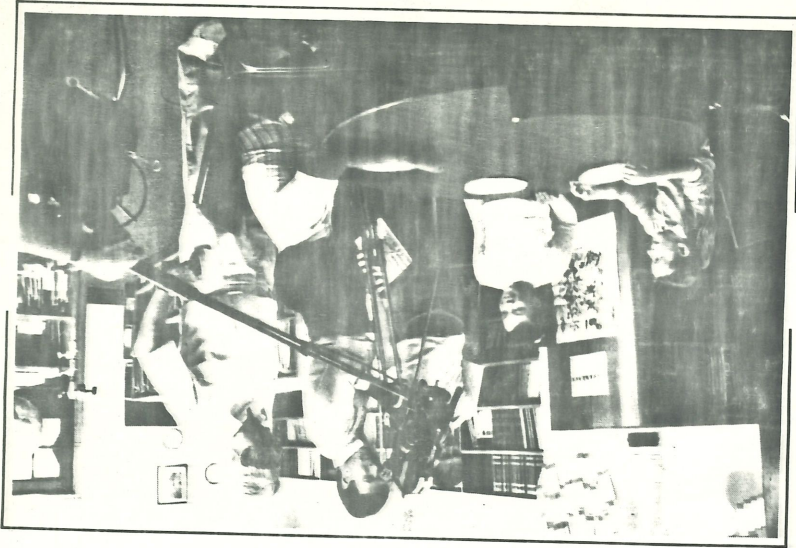
Send to:
LUTHERAN SCHOOL FOR THE DEAF
6861 E. NEVADA
DETROIT, MICHIGAN 48234

• Untrimmed labels are acceptable
• French language labels are acceptable

"Ephphatha" The Movie

In the picture below you see staff from Porta Films, the producer of our new movie, "Ephphatha" concerning the ministry of the school. Here you see them working in the children's library with a group preparing to film a sequence for the movie.

Elsewhere in this issue of the Advocate for Students With Special Learning Needs you will find an order form for securing the film either in 16mm film, VHS, or Beta video tape.





Rev. Rodney R. Rynearson bids farewell after 12 years as executive director

LUTHERAN SCHOOL FOR THE DEAF

6861 East Nevada • Detroit, Michigan 48234
313 - 368-1220

Rev. Rodney R. Rynearson, Ed.D.
Executive Director

GOD (continue to) BE BY YOU
The English word "goodbye" means "God be by (or with) you".

It is time for (my wife and) I to say goodbye to all of the wonderful people involved with the Lutheran School for the Deaf.
God certainly has been with the School these past 12, 1/2 years in a variety of wonderful and very loving people.

First and foremost God has been by the students. In our memories are hundreds of students with a variety of special learning needs (deaf, learning disabled, mildly mentally retarded, and very creative). It has been a great joy to see these young people grow in faith as they also grow in knowledge.

Secondly, God had been by the faculty and staff. These dedicated and hardworking individuals have given more than 110% of their time and energy to share Jesus' love with the students as they taught, cooked, cleaned, kept records, and did hundreds of very necessary activities to make the School a pleasant place for young people to learn.

God surely has been by us through the VOLUNTEERS who give so much time through so many different skills to help the students. The Board with their vision and their determination to use every resource for the good of the students has been a fantastic resource. We deeply appreciate the ladies (from two different chapters) of the auxiliaries who work in a variety of ways and who always pray for the students. Then there are volunteers who address the Advocate, keep addresses up to date on the computer, repair chairs, tutor students, and thousands of other tasks, all of which make the place work. And always there are the Donors, who through their gifts of money, materials, and prayers uphold and support the whole project.

There are many wonderful people I would like to thank, but to do so by name would mean extra pages for this Advocate. The one I will thank is the person who in addition to doing more than 38 different jobs around the school, also supported me in countless ways, my wife Rhoda.

God has been with the School as its mission and ministry have expanded to assist many more students in a variety of educational settings both in Metro Detroit and in the Chicagoland area.

It is our prayer that God always continue to be with each of you as that ministry continues to expand in coming days.

God be with you.

Goodbye.
Thank you.

Yours in Christ,

Rodney R. Rynearson
Rev. Rodney R. Rynearson

CHRISTIAN EDUCATION:

- DETROIT: Residential Deaf, Learning Disabled, Gifted, Educably Mentally Retarded
- L.D. SATELLITES: Holy Cross, Detroit; St. Paul, Farmington Hills; St. Paul, Sterling Heights; Trinity, Utica; Trinity, Mt. Clemens; St. Peter, Macomb
- CHICAGO SATELLITES: Hope, Jehovah, Pilgrim, St. John, Trinity, Zion, Chicago; St. John, Lansing; Immanuel, Richton Park; St. Paul, Melrose Park
- EPHAPHATHA INSTITUTE: Special Education Materials and Teacher Training for Schools and Congregations



"THEN SHALL THE DEAF HEAR"
Is. 29: 18



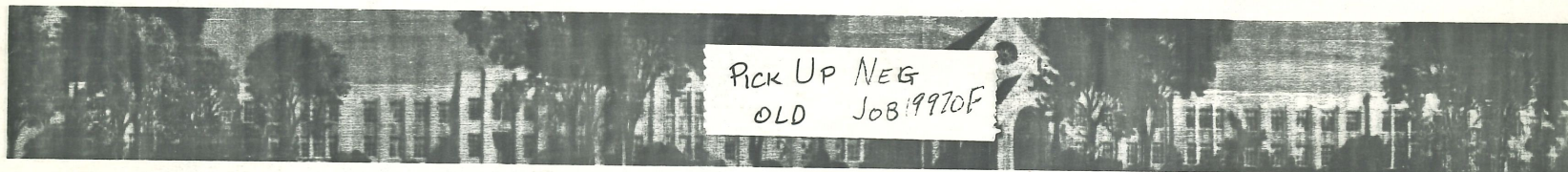
Labels for Education Program

1986-1987

As this issue goes to press, we are packaging the final bundles of Campbell's labels for shipment. Further issues will share information regarding what was received from this campaign.

The ADVOCATE for Students with Special Learning Needs — USPS 150-480
 Published quarterly by the Lutheran School for the Deaf, 6861 E. Nevada, Detroit, Michigan 48234
 Editor — William H. Harlow, Resource Cultivator
 Managing Editor — Roy Dr. Rodney T. Brockmeyer, Executive Director
 Telephone (313) 368-1220
 Send all communications regarding the Editing, and ALL ADDRESS CHANGES to the above address.

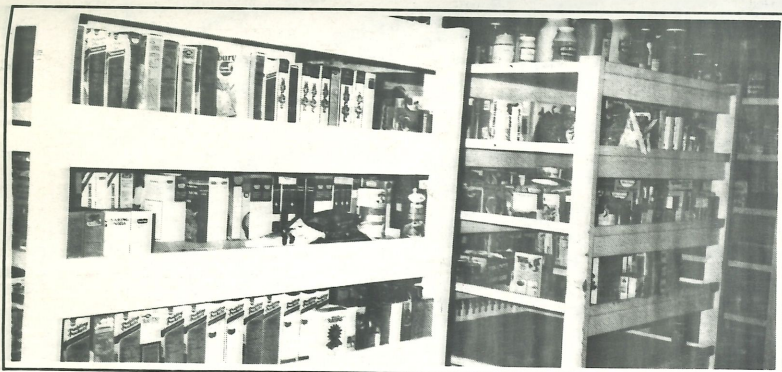
DETROIT, MICH.
 AT
 POSTAGE PAID
 SECOND CLASS



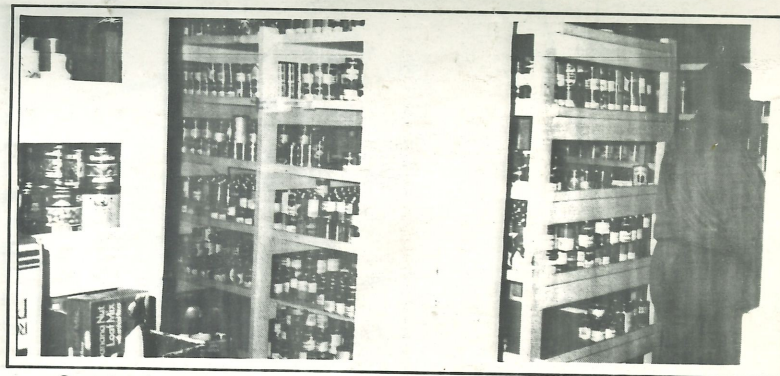
Pound Day

Our 1986 Pound Day appeal was very successful. As you see in the pictures here, our shelves are now filled with cake mixes, canned goods, condiments, soups, vegetables, and fruit. The staff in our kitchen has been busy restocking the shelves and sorting food by category. We want to thank all of those who participated in this worthwhile project. After many

years of declining ^{appeal} participation, our cupboards were bare. This year's program netted approx 28,000 lbs. of food. We are very gratified with the response from those who participated, and we wish to thank all who did so.



Generous donations of cake mix will bring smiles of delight to many faces.



Our storehouse of Campbell soups will warm us on many a winter day.

The name of Pound Day comes from the fact that we convert the weight of food donated to a cash value and give credit for a donation in value to those organizations and individuals who participated. Also, many groups contributed cash to be earmarked for the Child Nutrition Program and this has also enabled us to continue to provide fresh fruits and vegetables as well as meat and other products for the food program.



Vegetables are a necessary ingredient in a healthy diet.
**AGAIN, THANK YOU FOR YOUR PARTICIPATION
 IN THIS PROGRAM**

***** ORDER FORM *****

Clip—Return to:
 Lutheran School for the Deaf
 6861 East Nevada Avenue
 Detroit, MI 48234

Please schedule your new visual presentation entitled "Ephphatha" for showing on the following date:

Preferred Date _____

Alternate Date _____

Please send _____ 16mm Color sound movie
 _____ Video tape (VHS Beta)

Name of requesting Congregation or Organization _____

Address _____

City and State _____ Zip _____

Signed _____

MUST HAVE 38" GRIPPER - TOP AND BOTTOM

38"

38