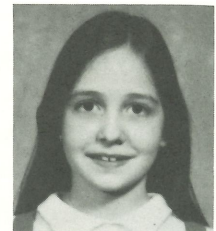


STATEMENT OF MINISTRY

With the knowledge of God's love and desire that God's love be revealed through our ministry, the Lutheran School For The Deaf Special Education Ministries serves to enable children with special learning needs to receive a Christian Education.



"A Year of Special Learning & Growing"

Executive Director's Report:



"A year of special learning and growing." I can't think of a better way to describe the happenings of the past year, a year of learning and growing for both the ministry and for me personally.

As you can see from the graph, the total number of students receiving direct service from our special education teachers has grown to 306, an all time high. That's 52 more children than 1986-87. But the graph doesn't tell the whole story.

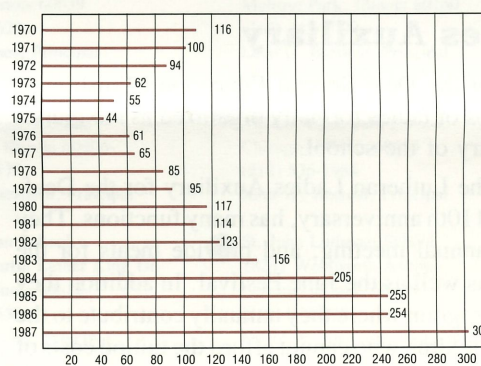
In addition to the students receiving direct service, our Ephphatha Institute in Detroit and Chicago has diagnosed over 200 children to evaluate their special learning needs and share information with parents and teachers that will help the children be more successful in school. Although the student enrollment graph indicated 306, over 500 children have received some type of service through our wonderful ministry.

On a personal note, let me share with you how I have learned and grown this past year. Soon after receiving the Call to serve as the eighth executive director, I learned that the task that the Lord had put before me was overwhelming. The need for our service is unbelievable! I worried about all the issues facing our ministry. How can I develop a system that will meet all the needs of our children? How can I decide where our programs should be established? How can I raise money to develop these programs? How can I . . . ? The list goes on.

What I quickly learned was that I needed to use less of the pronoun "I" and more of the pronouns "we" and "He." Clearly, I alone cannot do all that this ministry requires, but we can as long as we rely on the direction which He provides. What a realization! This is a team ministry. Hundreds of people working together to enable children with special learning needs to receive a Christian education. All under God's direction. I certainly have learned and grown in both knowledge and faith.

In the rest of this issue read about the special learning and growing that has taken place throughout our ministry. To God alone be glory.

Student Enrollment



	1986	1987
Detroit Main Campus . . .	86	78
Metro-Detroit High School Satellites	43	66
Metro-Detroit Elementary Satellites	63	93
Chicagoland Elementary Satellites	62	69
TOTAL	254	306

Chicagoland Special Education Teachers Plant "Seeds of Faith"...

Billy

"Teachers touch the future" accurately summarizes the reason many men and women have become professional educators. For Lutheran educators "the future" includes planting the seeds of faith in a child's heart and watching it grow as the Holy Spirit works within.

Billy, a student in one of our Chicagoland Lutheran Special Education Services programs, was given these "seeds of faith." A transfer student from a public school, Billy began to learn of Jesus while in his regular fourth grade classroom and our special education resource room. His special academic learning needs were met as Billy read bible stories. Billy had many questions to ask. The individualized resource room became the perfect setting for Billy and his special education teacher to openly share their faith. Billy asked if he, too, could become a child of God through baptism. Billy and his parents were baptized and have become members of the church where Billy attends school. His eagerness and joy in becoming one of God's children serves as a witness to each of us of the importance of our special ministry with each one of God's special children.



Billy learns to compensate for his learning disability in the resource room by using a multi-sensory approach of feeling, seeing, and hearing words.

Francis

Children who participate in the Chicagoland Lutheran Special Education Services program are achieving significantly below the regular classroom expectations.

Francis, a student from a Chicago Lutheran school, was referred to our Ephphatha Institute for educational evaluation. After the evaluation results were reviewed at a meeting with her parents, teacher, and principal, it was agreed that she needed special help from our resource room teacher.



Francis has grown academically and has also helped her family to grow spiritually. She is pictured here proudly displaying her science project.

When Francis enrolled in our program at the beginning of second grade, she was a non-reader. She was unable to write her own name or recognize the letters and sounds of the alphabet. With intensive one-to-one teaching and guidance, Francis has improved her reading two grade levels. She also had no measurable math skills, but now works on a mid-second grade level. But most important, seeds of faith were planted. With the power of the Holy Spirit, Francis and her family are now attending church regularly for the first time.

. . . "In Christ We Who Are Many Form One Body"

Board of Directors

Twelve individuals serve their Lord as members of the board of directors of Lutheran School for the Deaf Special Education Ministries. Four individuals are elected annually by the delegates of the association congregations to serve a three year term.

In addition to attending a minimum of five board meetings, each member serves on at least one of the four operating committees which are: 1) Education and Policy, 2) Finance and Investment, 3) Resource and Development, 4) Personnel.

Board members include: Paul Quitmeyer, president; Reverend Wilton Fluegge, vice-president; Allan Helland, secretary; Elmer Engel, treasurer; Terry Davis, James Hoerberling, Walter Kaufmann, Robert Marowske, Reverend Albert Prouty, Reverend Jon Reusch, Reverend John Streit, Rolland Wilkening.

Honorary board members include: Herman Auch, Reverend Richard Bernthal, Carl Middeldorf, Reverend Edwin J. Rossow.

The board of directors gives special thanks to Mr. Don Rutter and Mr. Arvid Jouppi who are appointed by the board to serve on the Finance and Investment Committee.

Personnel

61 WORKERS IN HIS SERVICE

Detroit Lutheran Special Education Services	30
Chicagoland Lutheran Special Education Services	8
Ephphatha Institute	6
Finance and Property	14
Development	1
Executive Administration	2
Total	61

Parents

It has often been said that without parents we wouldn't have a school. This is especially true in the case of Lutheran School for the Deaf Special Education Ministries. Not only do our parents provide the students for our school, but they also help out in numerous other ways. Together with our parents we clipped and bundled half a million Campbell Soup labels from which we will receive approximately \$5,000 worth of school equipment. Our parents also willingly volunteer to help chaperone on field trips and excursions. Without our volunteers you would not be reading this article, as they help with the mailing. Our parents also help the Harvest Festival, Christmas Program, and Closing Festival run smoothly. Truly, we wouldn't have a school without our parents.



"We who are many" enjoy the fellowship of the annual meeting.

Just as each of us has one body with many members, and these members do not all have the same function, so in Christ we who are many form one body, and each member belongs to all the others. We have different gifts, according to the grace given us. If a man's gift is prophesying, let him use it in proportion to his faith. If it is serving, let him serve; if it is teaching, let him teach; if it is encouraging, let him encourage; if it is contributing to the needs of others, let him give generously; if it is leadership, let him govern diligently; if it is showing mercy, let him do it cheerfully.

(Rom. 12:4-8)

Volunteers

Any ministry like ours could not function if it were not for a host of volunteers.

Throughout the year various individuals and groups come to the school to volunteer their services to assist in the many activities that go on here. Some work with youngsters, some work in the office, some work with building and grounds projects, while others, like our ladies auxiliary, put on dinners and assist the school in carrying out its mission in many, many ways.



Mrs. Eleanora Trinity at work recording memorial contributions in our office.

We are grateful to God for the many individuals who give of their time and talents as volunteers for the children at our school.

Ladies Auxiliary

The Lutheran School for the Deaf Special Education Ministries is privileged to have two groups of ladies formally organized as auxiliaries to assist in the overall ministry of the school.

The Detroit chapter of the Lutheran Ladies Auxiliary for the Deaf, who recently celebrated their 110th anniversary, has many functions. They serve dinners, assist in the annual meeting, and provide meals for the annual Fall Harvest Festival as well as the June Festival. In addition they have a generous scholarship program where they annually contribute to the school specifically for needy children who cannot afford the tuition costs of our program.

The Ephphatha Chapter of the Lutheran Ladies Auxiliary for the Deaf has similar activities and also has a scholarship program to assist needy students. In addition they have earmarked a portion of their funds for support of satellite classrooms and the various items that cannot be purchased because of limited funds available.

We would encourage other ladies to become active in either of the chapters of the auxiliary so that they too may serve their Lord with gladness in this special capacity.

Donors

A charitable organization such as ours depends on donors for its primary means of support. Throughout the past year we have received gifts from individuals who have supported our ministry for many years. Without them it would not be possible to continue this ministry.

In addition, congregations and organizations within the church such as LWML groups, LLL groups, youth groups, and senior citizen groups regularly visit and contribute to our ministry. Outside the church we do receive resources from community service groups like Lions Clubs, Kiwanis, Civitan, and Rotary. Various foundations throughout the country support our ministry in accord with the guidelines that they have established. Also, significant matching gift programs do exist, and we have been the beneficiary of several of those during the past year.

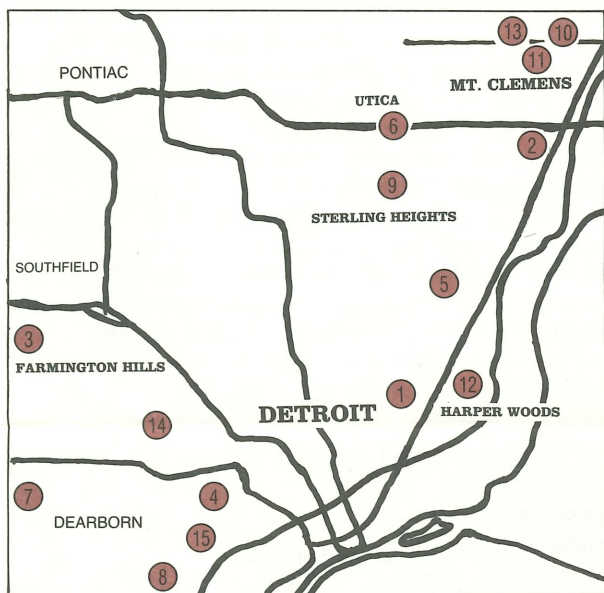
Our ministry is totally dependent on those who share our commitment to enable children with special needs to receive a Christian education.



... In Ministry to Special Children



Areas of Service



Detroit — The main campus and 14 satellites in Metropolitan Detroit.

- | | | |
|--|---|---|
| 1 Detroit Lutheran Special Education Services
6861 East Nevada
Detroit, Michigan 48234
(313) 368-1220
Herman Holste, PhD, Director | 6 Trinity Lutheran School
45091 Deshon
Utica, Michigan 48087
(313) 731-7770
Bruce Kozmatka, Principal | 11 Immanuel Lutheran Church
47120 Romeo Plank
Mt. Clemens, Michigan 48044
(312) 286-7076
Robert J. Christian, Principal |
| 2 Trinity Lutheran School
38900 Harper
Mt. Clemens, Michigan 48043
(313) 468-8511
Alva Samsell, Principal | 7 St. Michael Luthern School
3003 Hannan Road
Wayne, Michigan 48184
(313) 728-1950
Harvey Schmit, Principal | 12 Lutheran High School East
20100 Kelly Road
Harper Woods, Michigan 48225
(313) 371-8750
Clayton Hufnagel, Principal |
| 3 St. Paul Lutheran School
20805 Middlebelt
Farmington Hills, Michigan 48024
(313) 474-2488
Randy Zielinski, Principal | 8 St. John Lutheran School
13115 Telegraph
Taylor, Michigan 48180
(313) 287-3866
Dale Smith, Principal | 13 Lutheran High School North
16825 24 Mile Road
Mt. Clemens, Michigan 48044
(313) 781-9151
Dale Cooper, Principal |
| 4 Holy Cross Lutheran School
14213 Whitcomb
Detroit, Michigan 48227
(313) 273-6189
Pamela Broadway, Principal
Robert Schreiner | 9 St. Paul Lutheran School
42681 Hayes Road
Sterling Heights, Michigan 48078
(313) 247-4427
Gary Pawlitz, Principal | 14 Lutheran High School Westland
33300 Cowan Road
Westland, Michigan 48185
(313) 422-2090
Ross Stueber, Principal |
| 5 St. John Lutheran School
16339 14 Mile Road
Fraser, Michigan 48026
(313) 294-8740
Mark Joyce, Principal | 10 St. Peter Lutheran School
17051 24 Mile Road
Mt. Clemens, Michigan 48044
(313) 781-3434
Terry Davis, Principal | 15 Lutheran High School West
8181 Greenfield
Detroit, Michigan 48228
(313) 584-3621
Ron Rivers, Principal |

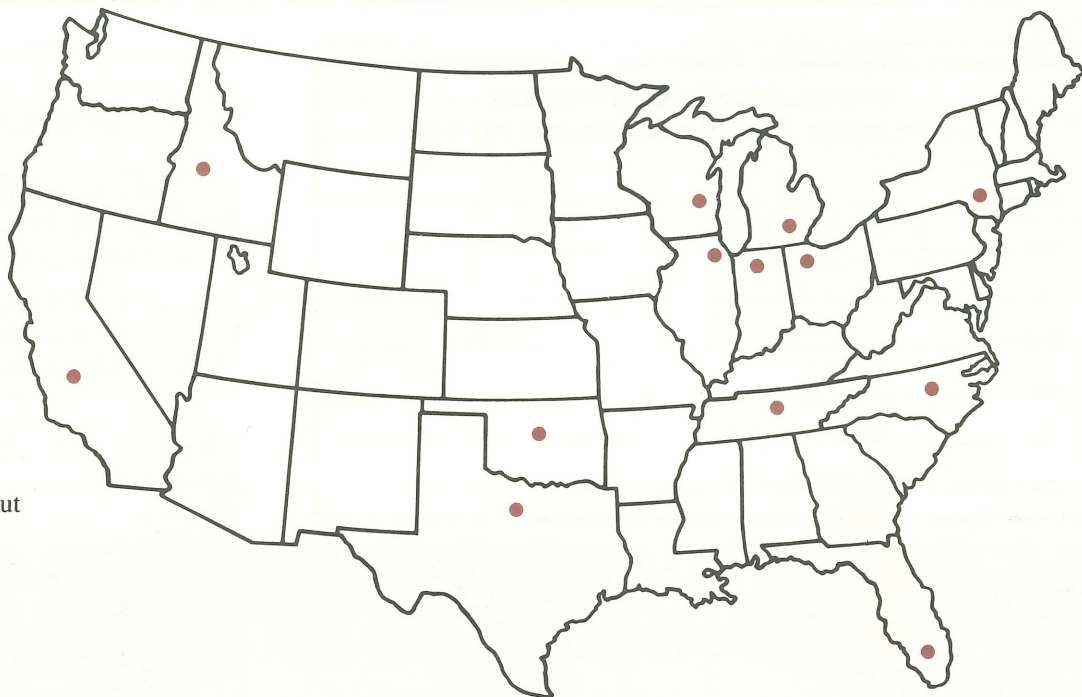


Chicago — 14 Satellite locations housing special education resource rooms.

- | | | | |
|---|--|---|---|
| 1 Jehovah Lutheran School
3740 W. Belden
Chicago, Illinois 60647
(312) 342-5854
Greg Block, Principal | 5 Prince of Peace Lutheran School
4913 W. Medill Avenue
Chicago, Illinois 60639
(312) 637-1623
Lynn Vaicunes, Principal | 9 St. Paul Lutheran School
1000 Superior
Melrose Park, Illinois 60160
(312) 343-5000
Leon C. Bierlein, Principal | 12 Immanuel Lutheran School
148 E. Third
Elmhurst, Illinois 60126
(312) 832-9302
Vernon Kuerschner, Principal |
| 2 Ashburn Lutheran School
3343 W. 83rd Street
Chicago, Illinois 60652
(312) 737-2156
Larry Ehretzman, Principal | 6 Salem Lutheran School
12951 S. Maple Avenue
Blue Island, Illinois 60406
(312) 388-6175
Charles Winterstein, Principal | 10 Christ the King Lutheran School
3701 S. Lake Park Avenue
Chicago, Illinois 60653
(312) 536-1984
John W. Brazeal, Principal | 13 Pilgrim Lutheran School
4300 N. Winchester
Chicago, Illinois 60613
(312) 477-4824
David Maring, Principal |
| 3 Hope Lutheran School
6416 Washtenaw
Chicago, Illinois 60629
(312) 776-7816
Emil Becker, Principal | 7 Zion Lutheran School
10858 S. Martin Luther King Dr.
Chicago, Illinois 60628
(312) 928-3530
Saundra Mickles, Principal | 11 St. John Lutheran School
18241 Wentworth Avenue
Lansing, Illinois 60438
(312) 895-9280
David W. Swanson, Principal | 14 Trinity Lutheran School
2601 N. Meade
Chicago, Illinois 60639
(312) 622-0500
Richard Schoenberger, Principal |
| 4 St. John Lutheran School
4939 W. Montrose
Chicago, Illinois 60641
(312) 736-1196
Delmar Werner, Principal | 8 Immanuel Lutheran School
4800 Saulk Trail
Richton Park, Illinois 60471-1081
(312) 747-1138
David Kleimola, Principal | | |

Nationally — Ephphatha Institute providing evaluation, consultation, in-service education and curriculum resource services.

(Ephphatha Institute reaches out to these states, but we are available for all who need our services.)



9-850
 Mr & Mrs Alfred A Brokop
 31873 Breezeaway
 New Baltimore MI 48047-3051

SECOND CLASS
 POSTAGE PAID
 AT
 DETROIT, MICH.

The ADVOCATE for Students with Special Learning Needs — USPS 150-480
 Published quarterly by the
 Lutheran School for the Deaf Special Education Ministries
 6861 E. Nevada
 Detroit, Michigan 48234
 Editor — William H. Hartow, Resource Cultivator
 Managing Editor — Mr. Roger DeMeyere, Executive Director
 Telephone (313) 368-1220
 Send all communications regarding the Editing, and
 ALL ADDRESS CHANGES to the above address.

1987-88 Service Growth

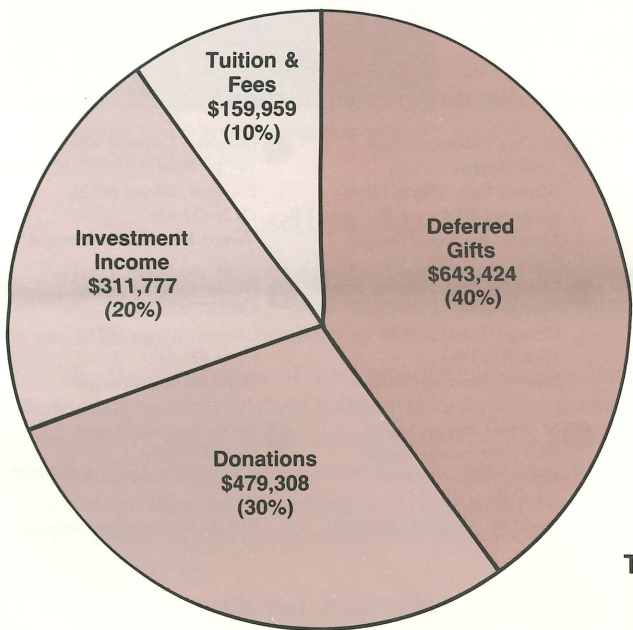
The 1987-88 school year has been a year of tremendous growth in services in all parts of our ministry. Ephphatha Institute has added a school psychologist and secretary in Detroit and an educational evaluator in Chicago. These new positions were all necessary in order to keep up with the increasing demands for evaluation and consultation services.

Instructional services have also expanded due to increased enrollment by hiring four additional special education teachers in Chicago and Detroit. Services for children in Detroit were improved even more when we established a Before and After School Care program where parents whose children attend the main campus school could be assured that their children would receive supervised activities in a safe environment.

The increased demand for children's services also meant we needed to increase the administrative support available for our director of Detroit Lutheran Special Education Services. An assistant director was therefore added on a half time basis.

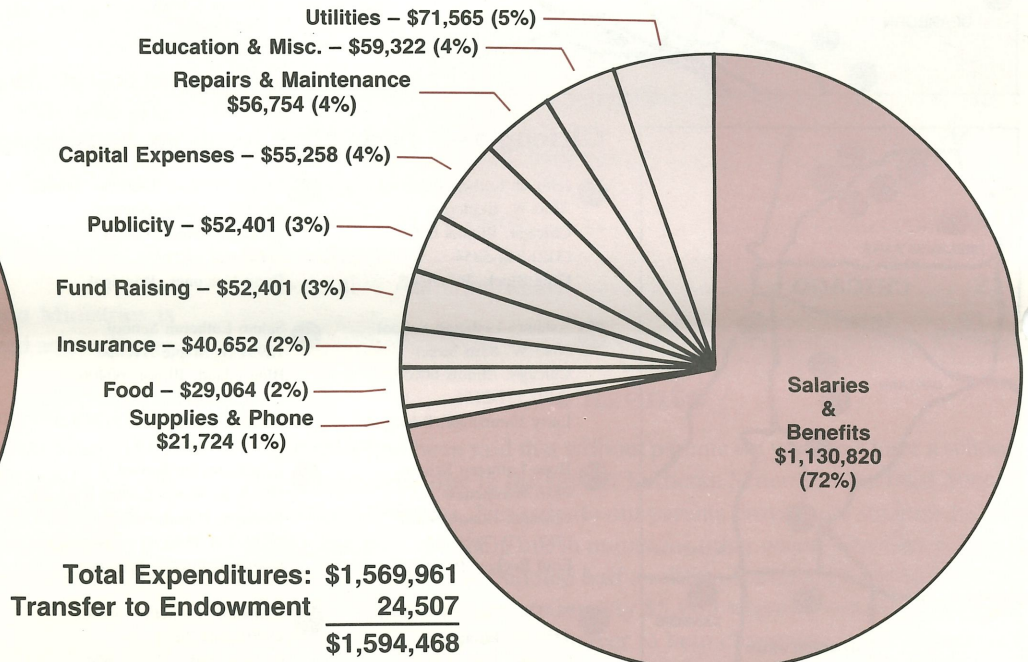
The 1987-88 school year thus far has seen dramatic growth in the number of children being served and the number of personnel necessary to serve. We praise God for the blessings of this past year, and we pray that we will all continue to learn and grow in the knowledge and love of Jesus Christ.

Income (1986-87)



Total Income \$1,594,468

*Expenditures (1986-87)



* Figures reflect actual cash flow including non-budgeted capital expenses; therefore, depreciation of \$119,050 is not included.

"BIG REUNION" REGISTRATION

Deadline: May 31, 1988 (No refunds after this date)

Name _____
 Address _____
 City _____
 State _____
 Zip _____
 _____ Student _____ Teacher _____ Staff
 Will you attend Festival Dinner? Yes ___ No ___

Reunion Registration

This is the last chance for alumni and staff to register for the "Big Reunion," June 10-12, celebrating the 115th anniversary of the school. The registration deadline is May 31, 1988. Please call or write:

Kathy Johnston
 4323 Manor Avenue
 Royal Oak, Michigan 48073

Ken Carter
 3241 Howard
 Royal Oak, Michigan 48072
 (313) 288-6148 TDD

Registration fee is \$25.00 (U.S. dollars). Please use certified check or money order.

